

South West Local Area Committee

Thursday 17 March 2022 at 7.00 pm

Tapton Masonic Hall, Shore Lane,
Sheffield, S10 3BU

The Press and Public are Welcome to Attend

A logo consisting of a circle formed by several overlapping, curved segments in various colors including yellow, green, blue, and pink.

Local Area
Committees

Membership Engage · Empower · Enable

Councillor Andrew Sangar (MBE) (Chair)
Councillor Joe Otten (Deputy Chair)
Councillor Sue Alston
Councillor Roger Davison
Councillor Tim Huggan
Councillor Mohammed Mahroof
Councillor Barbara Masters
Councillor Ruth Milsom
Councillor Shaffaq Mohammed
Councillor Colin Ross
Councillor Martin Smith
Councillor Cliff Woodcraft

PUBLIC ACCESS TO THE MEETING

Local Area Committees engage, enable, and empower communities across the city with increasing control over decision making, marking a major shift in power to communities. The Committees provide a geographical framework that, over time, will be used to prioritise and direct the local delivery of an increasing number of Council services and oversee the production of a co-produced annual Area Committee Plan which will reflect resident priorities.

A copy of the agenda and reports is available on the Council's website at www.sheffield.gov.uk. You may not be allowed to see some reports because they contain confidential information. These items are usually marked * on the agenda.

Members of the public have the right to ask questions or submit petitions to Area Committee meetings and recording is allowed under the direction of the Chair.

Please see the [website](#) or contact Democratic Services committee@sheffield.gov.uk for further information regarding public questions and petitions and details of the Council's [protocol on audio/visual recording and photography](#) at council meetings.

Local Area Committee meetings are normally open to the public but sometimes the Committee may have to discuss an item in private. If this happens, you will be asked to leave. Any private items are normally left until last.

Local Area Committee executive decisions are effective six working days after the meeting has taken place, unless called-in for scrutiny by the relevant Scrutiny Committee or referred to the City Council meeting, in which case the matter is normally resolved within the monthly cycle of meetings.

In order for us to be able to effectively facilitate attendance at the meeting, we would encourage all attendees to notify us of your attendance in advance by contacting the [Area Committee Team](#) or emailing committee@sheffield.gov.uk

It is recommended that you wear a face covering in crowded and enclosed spaces where you come into contact with people you don't normally meet. We also encourage washing or sanitising your hands frequently - hand sanitiser will be provided. Please do not attend if you test positive for Covid-19 or if you are experiencing any Covid-19 symptoms.

If you require any further information please contact email committee@sheffield.gov.uk.

**SOUTH WEST LOCAL AREA COMMITTEE AGENDA
17 MARCH 2022**

Order of Business

- 1. Welcome and Housekeeping Arrangements**
- 2. Apologies for Absence**
- 3. Exclusion of Public and Press**
To identify items where resolutions may be moved to exclude the press and public.
- 4. Declarations of Interest** (Pages 5 - 8)
Members to declare any interests they have in the business to be considered at the meeting.
- 5. Minutes of Previous Meeting** (Pages 9 - 18)
To approve the minutes of the Committee Held on 16 September 2021.
- 6. Transition to Committees**
Report of the Transition to Committees Project.
- 7. Approval of the South West Local Area Community Plan 2022-23** (Pages 19 - 98)
 - a. Presentation by Denise Devoto, South West Local Area Committee Manager
 - b. Breakout groups on implementation of the approved Plan.
 - c. Summary feedback from the breakout rooms.
 - d. Discussion and approval of the Plan by Members.
- 8. Update on Ward Pots and Community Infrastructure Levy funds/spend**
Presentation by Denise Devoto, South West Local Area Committee Manager.
- 9. Public Questions and Petitions**
To receive any questions or petitions from members of the public.

NOTE: The next meeting of South West Local Area Committee will be held on a date to be agreed.

This page is intentionally left blank

ADVICE TO MEMBERS ON DECLARING INTERESTS AT MEETINGS

If you are present at a meeting of the Council, of its executive or any committee of the executive, or of any committee, sub-committee, joint committee, or joint sub-committee of the authority, and you have a **Disclosable Pecuniary Interest (DPI)** relating to any business that will be considered at the meeting, you must not:

- participate in any discussion of the business at the meeting, or if you become aware of your Disclosable Pecuniary Interest during the meeting, participate further in any discussion of the business, or
- participate in any vote or further vote taken on the matter at the meeting.

These prohibitions apply to any form of participation, including speaking as a member of the public.

You **must**:

- leave the room (in accordance with the Members' Code of Conduct)
- make a verbal declaration of the existence and nature of any DPI at any meeting at which you are present at which an item of business which affects or relates to the subject matter of that interest is under consideration, at or before the consideration of the item of business or as soon as the interest becomes apparent.
- declare it to the meeting and notify the Council's Monitoring Officer within 28 days, if the DPI is not already registered.

If you have any of the following pecuniary interests, they are your **disclosable pecuniary interests** under the new national rules. You have a pecuniary interest if you, or your spouse or civil partner, have a pecuniary interest.

- Any employment, office, trade, profession or vocation carried on for profit or gain, which you, or your spouse or civil partner undertakes.
- Any payment or provision of any other financial benefit (other than from your council or authority) made or provided within the relevant period* in respect of any expenses incurred by you in carrying out duties as a member, or towards your election expenses. This includes any payment or financial benefit from a trade union within the meaning of the Trade Union and Labour Relations (Consolidation) Act 1992.

*The relevant period is the 12 months ending on the day when you tell the Monitoring Officer about your disclosable pecuniary interests.

- Any contract which is made between you, or your spouse or your civil partner (or a body in which you, or your spouse or your civil partner, has a beneficial interest) and your council or authority –
 - under which goods or services are to be provided or works are to be executed; and
 - which has not been fully discharged.

- Any beneficial interest in land which you, or your spouse or your civil partner, have and which is within the area of your council or authority.
- Any licence (alone or jointly with others) which you, or your spouse or your civil partner, holds to occupy land in the area of your council or authority for a month or longer.
- Any tenancy where (to your knowledge) –
 - the landlord is your council or authority; and
 - the tenant is a body in which you, or your spouse or your civil partner, has a beneficial interest.
- Any beneficial interest which you, or your spouse or your civil partner has in securities of a body where -
 - (a) that body (to your knowledge) has a place of business or land in the area of your council or authority; and
 - (b) either -
 - the total nominal value of the securities exceeds £25,000 or one hundredth of the total issued share capital of that body; or
 - if the share capital of that body is of more than one class, the total nominal value of the shares of any one class in which you, or your spouse or your civil partner, has a beneficial interest exceeds one hundredth of the total issued share capital of that class.

If you attend a meeting at which any item of business is to be considered and you are aware that you have a **personal interest** in the matter which does not amount to a DPI, you must make verbal declaration of the existence and nature of that interest at or before the consideration of the item of business or as soon as the interest becomes apparent. You should leave the room if your continued presence is incompatible with the 7 Principles of Public Life (selflessness; integrity; objectivity; accountability; openness; honesty; and leadership).

You have a personal interest where –

- a decision in relation to that business might reasonably be regarded as affecting the well-being or financial standing (including interests in land and easements over land) of you or a member of your family or a person or an organisation with whom you have a close association to a greater extent than it would affect the majority of the Council Tax payers, ratepayers or inhabitants of the ward or electoral area for which you have been elected or otherwise of the Authority's administrative area, or
- it relates to or is likely to affect any of the interests that are defined as DPIs but are in respect of a member of your family (other than a partner) or a person with whom you have a close association.

Guidance on declarations of interest, incorporating regulations published by the Government in relation to Disclosable Pecuniary Interests, has been circulated to you previously.

You should identify any potential interest you may have relating to business to be considered at the meeting. This will help you and anyone that you ask for advice to fully consider all the circumstances before deciding what action you should take.

In certain circumstances the Council may grant a **dispensation** to permit a Member to take part in the business of the Authority even if the member has a Disclosable Pecuniary Interest relating to that business.

To obtain a dispensation, you must write to the Monitoring Officer at least 48 hours before the meeting in question, explaining why a dispensation is sought and desirable, and specifying the period of time for which it is sought. The Monitoring Officer may consult with the Independent Person or the Council's Audit and Standards Committee in relation to a request for dispensation.

Further advice can be obtained from Gillian Duckworth, Director of Legal and Governance on 0114 2734018 or email gillian.duckworth@sheffield.gov.uk.

This page is intentionally left blank

SHEFFIELD CITY COUNCIL

South West Local Area Committee

Meeting held 16 September 2021

PRESENT: Councillors Sue Alston, Tim Huggan, Mohammed Mahroof, Barbara Masters, Ruth Milsom, Joe Otten (Deputy Chair), Andrew Sangar (Chair) and Martin Smith

.....

1. APOLOGIES FOR ABSENCE

1.1 Apologies for absence were received from Councillors Roger Davison, Shaffaq Mohammed, Colin Ross and Cliff Woodcraft.

2. EXCLUSION OF PUBLIC AND PRESS

2.1 No items were identified where resolutions may be moved to exclude the public and press.

3. DECLARATIONS OF INTEREST

3.1 There were no declarations of interest.

4. MINUTES OF PREVIOUS MEETINGS

4.1 The minutes of meetings of the Committee held on 19th May and 7th July 2021, were approved as correct records.

5. AUTHORISATION OF THE COMMUNITY SERVICES MANAGER TO TAKE DECISIONS ON BEHALF OF THE COMMITTEE

5.1 The Community Services Manager, submitted a report setting out the mechanism for the Local Area Committee to enable decisions to be taken quickly and to respond to emerging issues by authorising the Community Services Manager to make decisions on expenditure between Committee meetings, subject to certain conditions.

5.2 **RESOLVED:** That the South West Local Area Committee authorises the Community Services Manager to make decisions on expenditure from any budgets allocated to the Local Area Committee provided that:

- The decision is taken in consultation with the Local Area Committee Chair.
- Spending is in line with any specific purposes of the allocated budget.

- The decision may not approve expenditure of more than £5,000.
- A report detailing the delegated spending decisions taken by the Community Services Manager is presented to the next Local Area Committee meeting.

5.3 Reasons for Decision

The proposal to authorise decisions on any budgets allocated to the Committee can be discharged, in part, by the Community Services Manager will ensure the Committees can respond quickly to emerging local issues.

5.4 Alternatives Considered and Rejected

All decisions relating to budgets allocated to the Local Area Committee could be decided at Formal Committee Meetings only. Whilst this approach would ensure the involvement of all members of the Committee, it would mean that decisions to allocate spending for emerging and urgent local issues may not be made in a timely fashion.

5.5 Any Interest Declared or Dispensation Granted

None.

5.6 Reason for Exemption if Public/Press Excluded During Consideration

None.

5.7 Respective Director Responsible for Implementation

None.

5.8 Relevant Scrutiny and Policy Development Committee If Decision Called In

Overview and Scrutiny Management Committee.

6. LOCAL AREA COMMITTEES - EMPOWERING COMMUNITIES

6.1 The Committee received a presentation from the Community Services Manager on Local Area Committees (LACs), as part of the Empowering Communities Programme.

6.2 Denise Devoto reported on the operation and role of LAC, the initial funding allocation for the Committees, engagement activity, how the public could get involved, details of the Members of the Committee and the South West Local Area Committee Team and contact details relating to the LAC.

6.3 The Committee noted the information now reported as part of the presentation.

7. AGE UK SHEFFIELD - PEOPLE KEEPING WELL

7.1 The Committee received a presentation from Joanna Woodward (Age UK Sheffield) on funding, known as Community Funding Pots, provided by Age UK Sheffield to individuals, groups or organisations to undertake an activity that would benefit their local community. Ms Woodward reported that the money could be used by someone to either set up a new activity, or by an existing provider needing additional resources, and referred to a number of examples of activities funded in the past. She concluded by reporting on how people could join, or be referred into, an activity.

7.2 RESOLVED: That the Committee:-

- (a) noted the information reported as part of the presentation; and
- (b) thanked Joanna Woodward for attending the meeting and making the presentation.

8. PUBLIC QUESTIONS AND PETITIONS

8.1 The Committee received the following questions from members of the public who had submitted the questions prior to the meeting, and who were in attendance to raise them: -

(a) Christopher Pennell

Will the South West LAC have any role in determining how CIL (Community Infrastructure Levy) funds arising from development occurring in Dore will be spent and if so what role and on what authority?

In response, the Chair stated that the South West LAC will have the same role in determining spending in Dore as all LACs will have with the wards in their area. This will currently be in accordance with the Councillors' Guide approved by the Safer and Stronger Communities Scrutiny and Policy Development Committee on Thursday, 13th December 2018.

The Cabinet decision under Item No. 8.2(b) states:-

“RESOLVED: That Cabinet:-

delegates authority to the Head of Libraries, Community Services & Learning & Skills, in consultation with the Cabinet Member for Neighbourhoods and Community Safety, to determine: (i) how the CIL Neighbourhood Portion allocated to each ward is spent, following engagement with local communities and Ward Councillors, subject to the proviso that monies are spent in accordance with agreed Ward Priorities and (ii) to determine the terms on which such expenditure is incurred including authorising the completion of any related funding agreement or other legal documentation”.

Unless this decision is amended, the LACs themselves do not make the

decisions, but are free to work with communities and make recommendations.

(b) Alan Kewley

1. I welcome this long-overdue review, but would request a pause for thought, to enable local electorates to consider these proposals more carefully, including the need for Ward Forums, to give citizens easier access to our City Council's new devolved decision-making processes.

In response, the Chair stated that whilst area working and the Local Area Committees were separate, they were linked in certain ways. The Cabinet, at its meeting in March 2021, and the Council, had approved the formulation of the Local Area Committees. In terms of previous area working by the Council, there had been Area Panels (2000 to 2009), Community Assemblies (2009 to 2013) and Area Partnerships from 2013 to 2021. Councillor Sangar made reference to the Referendum held in 2021, which had resulted in a majority vote for a shift from the Cabinet/Leader model to a Committee system. At the present time, there was the Co-operative Executive Committee, Governance Committee, Scrutiny Committees and Transitional Committees, with plans for the new Committee system to be implemented in May 2022. There will be a number of new Committees appointed, including an Audit Committee. The way the Local Area Committees will operate will develop over time.

2. The City Council's main Website has become too complex to provide easy access to information on local issues. Could local Websites be introduced at LAC or Ward level to provide better access to local information, rather than the junk emails which are now being sent-out and received?

In response, Denise Devoto stated that the Council had recently created individual LAC web pages for each area – see www.sheffield.gov.uk/lac - these provide details for the specific LACs, and the Council Website was in the process of being re-designed, with timescales for this to be determined. Ms Devoto added that the team had distribution lists, which it used for the circulation of information relating to the LAC, as well as other community information/events that may be of interest to the public. If people did not wish to receive such emails, they should inform the team, and they would be removed from the list.

3. Who is responsible for scrutinising this new process to ensure its Effectiveness and Good Value, and how do they plan to get feedback from the electorate?

The Chair confirmed that there would be a review of the effectiveness of the new LAC arrangements in due course.

(c) Jason Leman

1. The ambition for the LACs is that they will succeed where Community Assemblies, Area Panels and Local Area Partnerships rarely made an impact. What's going to be different this time?

In response, the Chair stated that the Committee aimed to be open and inclusive, and wished to empower local communities. The Committee would engage with the communities to determine what issues there were in a local area. The Committees would allow for access to much wider mechanisms to be able to have a dialogue with local communities – not just public meetings, but online surveys and, with effect from 2022, the potential to webcast, which would offer a greater potential to engage and let the public have their say. The Committees had a dedicated staffing resource, as well as an identified Link Officer resource in named Services to address particular issues where normal channels, for whatever reason, may not be working as intended. The Committee had an initial budget of £100,000 to spend on agreed priorities. There had been a directive from the Council's new Chief Executive and Leader that the Council should look to do things differently, and LAC formed part of this process. The Committees had access to a whole host of data sources to be able to establish a baseline position and then track their effectiveness in addressing identified priorities. The Committees would also be working with the Voluntary and Community Faith Sector to capture input from groups they represent. The Committees would publish a Community Plan, which would outline what the agreed priorities were for that area, after consultation with the public/communities.

2. This LAC meeting is being held in Greystones, where our priorities might be the restoration of Bingham Park, or what we can do to support Banner Cross shops, or the availability of local health services. But every one of the many neighbourhoods in the South-West LAC will have their priorities. How will overall priorities be decided? Will those who shout loudest or speak with most eloquence at LAC meetings get funding, or will there be a process that reaches out and includes every community?

In response, the Chair referred to his previous response regarding community engagement, specifically the various mechanisms to capture as many voices as possible across all the four Council Wards. LACs were a grouping of Wards over a broader geography, and the aim was to identify issues and priorities that go across boundaries, to have the greatest impact, rather than focussing down on potentially very small geographies. In addition, Ward Councillors also had access to small pots of funding (Ward Pots) to support projects and initiatives at a local, Ward level.

3. The LAC focuses on our locality and local issues sometimes seem to be quite narrow, but climate change is a local issue, as is social inequality, as is education. People in our area come from many places and face many challenges. Will the Community Plan consider what we can do locally to address the bigger issues we face?

In response, the Chair stated that LACs have been established to focus on issues at a local level. 'Bigger picture' issues will be the responsibility of the Council as a whole, with the LACs having the ability to feed into whole Council thinking with regard to policy and strategy.

(d) Paul May

1. Do you worry that party politics may destroy local community democracy?
There will be a range of political representatives on the Committee.

In response, the Chair stated that, regardless of party affiliation, a Councillor represented, and worked on behalf of, the whole of their community. LACs wouldn't change that. The Committees were intended to bring decision-making closer to the local people, and to give local people a louder voice in matters affecting their neighbourhoods and communities. The LACs would therefore engage with their respective communities to identify what the issues and priorities were within their local areas, and to identify potential solutions. LACs were intended to engage, enable and empower those communities.

2. Will LAC decisions/proposals go back to the Council for ratification?

In response, the Chair stated that LACs had certain powers delegated to them and could only make decisions within their delegated powers. In respect of these delegated powers, decisions and proposals would not have to be referred back to the Council for ratification. All other decisions would continue to be made as they were previously. Issues currently dealt with at Ward level would continue to be dealt with at Ward level by the Ward Members, for example by using Ward Pot funding. LACs would be informed about some Ward level activities, including Ward Pot allocations, and if there was a desire to fund cross-Ward projects, LACs could give guidance, but could not make a decision. LACs would act as a formal consultation mechanism on Council and partner strategies and policies. Items may be added to the agenda of a LAC meeting by the Community Service Manager, in consultation with the Chair, by referral from Full Council, a Council Committee, an Overview and Scrutiny and Policy Development Committee, the Executive, the Chief Executive, the Monitoring Officer or the Chief Finance Officer, subject to compliance with the appropriate rules. Each LAC would provide a report to Full Council on their Community Plan and progress against objectives no more than once in a Municipal Year.

3. I note that residents in the Broomhill - Tapton area have been central in writing a neighbourhood plan which the Council has adopted. It includes the local community having the power to decide their own planning priorities eg developing green spaces, locating areas for housing development and influencing infrastructure such as roads. Do you envisage our LAC moving in a similar direction?

In response, the Chair stated that whether residents chose to explore the potential for a Neighbourhood Plan would be something that they would need to determine themselves, led by the local community. This was not something that LACs would take a lead on pursuing.

(e) Mike Hodson

What plans do the Councillors making up the SW LAC have for implementing their Terms of Reference, to promote the involvement of local people in the

democratic process...to bring decision-making closer to those local people ... for engaging with local residents and organisations ... and to enable those local people to influence Council decisions... etc.?

In response, Denise Devoto stated that whilst the LAC was responsible for decision-making, it would be keen to engage with the local communities in the best way the communities felt fit. Once the Committee had engaged with the communities, this would help it to identify what the priorities were across the area. The aim was to develop a Community Plan by January 2022, and further consultation would be held if required.

Councillor Joe Otten queried how such a plan could be developed when there was no clarity as to the area's priorities, and suggested that the Committee should publish a draft Plan, give the public an opportunity to comment on, and feed into, the draft, then develop a final version by January 2022. Nik Hamilton stated that whilst he appreciated the deadline of January 2022 was not far off, the Committee could ask the public to identify three top priorities in their respective Wards, and include them in the Plan. He added that their report on the Community Plans would be submitted to a future meeting of the Committee.

(f) Jennie Street

1. That the junction of Totley Brook Road, Abbeydale Road South and Bushey Wood Road desperately needs a roundabout because it is the most awful – and dangerous junction and causes huge traffic jams backed up Totley Brook Road, and some very bad driving behaviour.
2. That the grass verges on Mickley Lane need to be converted to parking places, because Mickley Lane is a slalom with heavy traffic cutting through from Dronfield, and not nearly enough parking on that road. Lots of near misses and unpleasant driving behaviour, and absolutely no visibility for cars coming out of the bottom end of Green Oak Road, resulting in lots of near misses. The grass verges get parked on anyhow, especially at the bottom near Green Oak Road, so could easily be converted, and, with sleeping policemen on the road would greatly improve safety.

In response, Councillor Martin Smith stated that highways issues, particularly speeding, represented the biggest problem in the Totley Ward, and suggested that the Committee should meet with Highways Officers to discuss such problems. Councillor Smith stressed the importance of the public contacting their Ward Councillors to raise their concerns.

The Chair added that the Highways Service was one of the delivery partners of the LACs, and the Council had identified a £4m budget for highways schemes city-wide.

- 8.2 The Committee received the following questions from members of the public who raised them at the meeting: -

(a) Alison Warner

What is the Local Authority's plan for "catch-up" in education and will this strategy be addressed on a LAC level following consultation with schools, parents and pupils/students?

In response, Councillor Mohammed Mahroof, Chair of the Education, Health and Care Transitional Committee, stated that he was well aware of the current attainment gap in terms of educational achievement by pupils attending schools in the south west and other areas of the city, with most schools in the south west being oversubscribed. He also made reference to issues regarding special educational needs city-wide which, in his opinion, had not been addressed adequately by the Council. Councillor Mahroof stated that he believed the LAC should, in some capacity, be looking at education as part of its work, even if it was in a lobbying role.

(b) Jim Turton

Why are residents at Westminster Crescent and Westminster Avenue being ignored by the City Council over the abhorrent behaviour by a handful of tenants?

In response, Councillor Sue Alston expressed her concerns and offered to contact the Housing Service on the member of public's behalf.

Councillor Ruth Milsom stated that there were similar incidents of anti-social behaviour in all wards across the city which, whilst being taken seriously by the Council, were very difficult to resolve. She recommended people to make a continuous effort to contact officers in an attempt to resolve the problems. She added that there were dedicated Safer Neighbourhood Officers for each area of the city.

The Chair stated that this issue would be referred to relevant Housing Officers, and a written response would be provided to Mr Turton.

(c) Maggie Riley

What happens to the £100,000 budget if there is no legitimate local demand/imperative for investment that will significantly benefit local citizens? Will the LAC be able to access this funding in a subsequent year, in addition to a further allocated budget? I'm concerned that there will be an indecent search for a rationale to spend the city's scarce resources on lower priority initiatives when very little is spent on high priority services such as schools and social care.

The Chair stated that a written response would be sent to Ms Riley.

(d) Steve Reynolds

Can the Council look into the road safety measures on the A57 Manchester

Road, Lydgate Lane, Tapton Hill Road and Shore Lane, in the vicinity of the local schools following a serious accident to a young boy crossing Manchester Road recently?

In response Councillor Mohammed Mahroof stated that he was aware of this incident, as well as the general traffic problems on Manchester Road, and had raised his concerns with Highways Officers on a number of occasions. Councillor Mahroof stated that he had walked round the area with Highways Officers, and had been informed by them that the area was not deemed a priority for the Council based on the death/accident rates. He added that there were also serious problems regarding parking in the area, and stressed the need for both Councillors and the public to keep raising their concerns.

Councillor Ruth Milsom concurred with these comments and suggested that the LAC could look at taking collective action, including comments from local residents, on this issue.

(e) Shauna Naylor

Is it possible to get some help into cleaning up/opening up the River Sheaf? There seems to be some pollutants going into it a couple of times a week, on a regular basis, from nearby Topley somewhere, and the residents are not getting anywhere with Yorkshire Water.

The Chair stated that a written response would be sent to Ms Naylor.

(f) Don Lennox

The Sheffield Plan says there should be smaller homes and “older people’s independent living accommodation” in the Ecclesall/Greystones area. There is derelict land at the top of Murray Road – old garages/abandoned cars/buildings, which could be a suitable site. Could this be achieved?

The Chair stated that a written response would be sent to Mr Lennox.

8.3 The LAC Manager reported that the Committee had received four further questions, as follows, from individuals in attendance, who chose not to ask them at the meeting, and that written responses would be given to these questions.

(a) Amanda Baxter

Do the LACs respond to questions about issues which are city-wide, not particularly local? For example, I think the Council should to take action to persuade or require takeaway restaurants to stop using plastic food containers, but this is a city-wide issue, not a local one. Similarly, I think cycle infrastructure should be improved.

(b) Jason Leman

If the aim of the LACs is to “Engage, Empower, Enable”, why are questions

from the public taken at the end of the meeting?

(c) Susan Smith

1. I understand Sheffield City Council is a signed up member of New Local – the new Local Government network. Who is responsible for this connection?
2. Does Age UK support the whole of the LAC area?

(d) Joe Sellars

Given the average age of attendees at the meeting was probably 60+, what specific actions/activities will the LAC undertake to engage with young people?

(e) Moira Bannister

How does the LAC propose to involve a much wider age group, particularly, young parents and young people, in order to gain a broader community perspective?



Author/Lead Officer of Report:
Denise Devoto, SW LAC Community Services
Manager

Tel: 07884 235371

Report of: Community Services Manager

Report to: South West Local Area Committee

Date of Decision: 17th March 2022

Subject: Approval of the South West LAC Community Plan 2022-23

Is this a Key Decision? If Yes, reason Key Decision:-	Yes <input checked="" type="checkbox"/>	No <input type="checkbox"/>
- Expenditure and/or savings over £500,000	<input type="checkbox"/>	
- Affects 2 or more Wards	<input checked="" type="checkbox"/>	
Which Executive Member Portfolio does this relate to? Community Engagement and Governance		
Which Scrutiny and Policy Development Committee does this relate to? Overview and Scrutiny Management Committee		
Has an Equality Impact Assessment (EIA) been undertaken in respect of this decision?	Yes <input type="checkbox"/>	No <input checked="" type="checkbox"/>
If YES, what EIA reference number has it been given? (Insert reference number)		
Does the report contain confidential or exempt information?	Yes <input type="checkbox"/>	No <input checked="" type="checkbox"/>
If YES, give details as to whether the exemption applies to the full report / part of the report and/or appendices and complete below:-		
<i>"The (report/appendix) is not for publication because it contains exempt information under Paragraph (insert relevant paragraph number) of Schedule 12A of the Local Government Act 1972 (as amended)."</i>		

Purpose of Report:

The Terms of Reference for Local Area Committees (LACs) provide that each LAC must agree a Community Plan setting priorities for the area of the committee, monitor delivery of that plan and keep it under review, and that the decisions it makes in relation to funding must fit with the priorities set out in the Community Plan and following engagement with the community.

Through public consultation, the South West LAC has developed a draft Community Plan that seeks to identify the key issues within the area and develop a series of priorities that will inform the direction of the LAC, and direct the spending of delegated budgets, where the LAC has authority to do so.

This Report recommends the approval of the draft South West Community Plan, attached as an Appendix to this report.

Recommendations:

It is recommended that the South West Local Area Committee:

Approves the South West Community Plan as a statement of the priorities of the area, subject to any amendments being agreed by Members at the meeting on 17th March 2022;

Authorises the Community Services Manager to produce a final version of the Community Plan document, incorporating any amendments approved by the LAC at its meeting of 17th March 2022, and to publish it on the webpages of the South West Local Area Committee; and

Notes that future LAC decisions relating to funding should fit with the priorities set out in the Community Plan and following engagement with the community.

Background Papers:

(Insert details of any background papers used in the compilation of the report.)

Appendix – South West Community Plan

Lead Officer to complete:-		
1	I have consulted the relevant departments in respect of any relevant implications indicated on the Statutory and Council Policy Checklist, and comments have been incorporated / additional forms completed / EIA completed, where required.	Finance: Kayleigh Inman
		Legal: Andrea Simpson
		Equalities: Adele Robinson
<i>Legal, financial/commercial and equalities implications must be included within the report and the name of the officer consulted must be included above.</i>		
2	Head of Service who approved submission:	Nik Hamilton
3	LAC Chair consulted:	Cllr Andrew Sangar
4	I confirm that all necessary approval has been obtained in respect of the implications indicated on the Statutory and Council Policy Checklist and that the report has been approved for submission to the Decision Maker by the Head of Service indicated at 2. In addition, any additional forms have been completed and signed off as required at 1.	
	Lead Officer Name: Denise Devoto	Job Title: SW LAC Community Services Manager
	Date: 17 th March 2022	

1. PROPOSAL

- 1.1 The Terms of Reference for Local Area Committees (LACs) provide that each LAC must agree a Community Plan setting priorities for the area of the committee, monitor delivery of that plan and keep it under review, and that the decisions it makes in relation to funding must fit with the priorities set out in the Community Plan and following engagement with the community.

Through public consultation, the South West LAC has developed a draft Community Plan that seeks to identify the key issues within the area, and develop a series of priorities that will inform the direction of the LAC, and direct the spending of delegated budgets, where the LAC has authority to do so.

Individual members of the LAC have played an active role in developing the content of the Plan, but the LAC must make a decision to approve the Plan as a whole as a statement of the priorities of the South West area.

This Report recommends the approval of the draft South West Community Plan, attached as an Appendix to this report.

The Community Plan seeks to identify specific priorities and develop a series of actions, whereby the LAC can work with residents; businesses; community organisations; Council departments and other statutory organisations to effect change.

The Community Plan is intended to be realistic in terms of what can be achieved within the timescales, having regard to financial, legal and logistical implications. It is principally a one-year plan, but some items may be carried forward into 23/24 depending on available resources going forward.

2. HOW DOES THIS DECISION CONTRIBUTE?

Local Area Committees directly support the Communities and Neighbourhoods and Our Council commitments in the 'Our Sheffield: One Year Plan' but to be effective they need to have the capability to respond quickly to emerging local issues.

3. HAS THERE BEEN ANY CONSULTATION?

- 3.1 The Community Plan has been developed through community consultation that has comprised of an online survey through the Council's Citizenspace platform; a paper-based survey for those less digitally enabled; engagement activity with representative organisations and online meetings.

Partner organisations and Council departments that have been identified as offering potential solutions to some of the issues identified have also been consulted, to establish whether suggestions can be realistically implemented.

4. RISK ANALYSIS AND IMPLICATIONS OF THE DECISION

4.1 Equality of Opportunity Implications

Decisions need to consider the requirements of the Public Sector Equality Duty contained in Section 149 of the Equality Act 2010.

This is the duty to have due regard to the need to:

- Eliminate discrimination, harassment, victimisation and any other conduct that is prohibited by or under the Act;
- Advance equality of opportunity between persons who share a relevant protected characteristic and persons who do not share it;
- Foster good relations between persons who share a relevant protected characteristic and persons who do not share it.

The Equality Act 2010 identifies the following groups as a protected characteristic: age; disability; gender reassignment; marriage and civil partnership; pregnancy and maternity; race; religion or belief; sex and sexual orientation.

- 4.1.1 The overall impact of this decision is likely to be positive and not disproportionate from an equality, diversity, and inclusion perspective. In developing a Community Plan, local communities have been given the opportunity for a greater say in local decision making for services which impact their daily lives.

The devolution of responsibilities will improve inclusion for local people and the work of the Sheffield Equality Partnership will support and enhance the approach from a citywide and underserved communities' perspective.

However, in order to ensure this approach takes into account people who share protected characteristics under the Public Sector Duties the Local Area Committee Community Plan will be supported by appropriate equality monitoring of budget.

An Equality Impact Assessment (EIA 916) was previously carried out in respect of the establishment of Local Area Committees.

4.2 Financial and Commercial Implications

- 4.2.1 There are no additional financial implications. This report relates to the initial decision to approve the Community Plan. The decision to allocate specific budgets to the Local Area Committees has already been made.

Procurement of supplies and/or services will be carried out in line with Standing Orders.

4.3 Legal Implications

- 4.3.1 The LAC must operate in accordance with its Terms of Reference, approved as a change to Council's Constitution by Full Council at its meeting on 18th March 2021. The Terms of Reference provide that each LAC must agree a Community Plan setting priorities for the area of the committee, monitor delivery of that plan and keep it under review, and that the decisions it makes in relation to funding should fit with the priorities set out in the Community Plan and following engagement with the community.

4.4 Other Implications

- 4.4.1 None

5. ALTERNATIVE OPTIONS CONSIDERED

- 5.1 None. A key element in establishing LACs is the principle that each LAC will develop a Community Plan.

6. REASONS FOR RECOMMENDATIONS

- 6.1 The proposal to approve the South West LAC Community Plan is recommended on the basis that the Plan provides a clear framework in how the LAC will direct it's resources to address key issues identified through community consultation.



TO BE AGREED AT PUBLIC MEETING 17TH MARCH 2022

South West Community Plan

Crookes & Crosspool - Dore & Totley - Ecclesall - Fulwood

Contents

What are Local Area Committees (LACs)?	Section 1
About the South West	Section 2
The South West LAC Community Plan 22/23	Section 3

Section 1

What are Local Area Committees (LACs)?

Page 27



Local Area Committees (LACs) are a way for people to get involved in making a difference to their local communities. Some budgets have already been devolved to the LACs for them to be used on issues and priorities that residents and communities have told us are important to them.

LACs are a chance for people to influence decision making, share their opinion and contribute to positive changes in their community. They are an opportunity for people to say what they would like to see improved in their area.

Whilst LACs have some initial devolved powers, the devolution of further powers will continue to evolve.

Further details about LACs can be found here - www.sheffield.gov.uk/home/your-city-council/local-area-committees



**Local Area
Committees**

Engage · Empower · Enable

Who are the Committee Members?

The South West Local Area Committee is made up of twelve elected Councillors, representing the four Council wards included within the South West LAC.

Crookes & Crosspool



Mohammed Mahroof

Email: mohammed.mahroof@councillor.sheffield.gov.uk



Ruth Milsom

Email: ruth.milsom@councillor.sheffield.gov.uk



Tim Huggan

Email: tim.huggan@councillor.sheffield.gov.uk

Dore & Totley



Colin Ross

Email: colin.ross@councillor.sheffield.gov.uk



Joe Otten - South West LAC Vice Chair

Email: joe.otten@councillor.sheffield.gov.uk

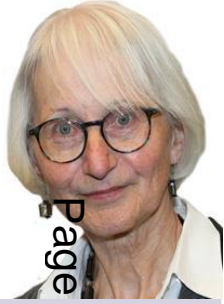


Martin Smith

Email: martin.smith@councillor.sheffield.gov.uk

Who are the Committee Members?

Ecclesall



Barbara Masters

Email:

barbara.masters@councillor.sheffield.gov.uk



Roger Davison

Email:

roger.davison@councillor.sheffield.gov.uk



Shaffaq Mohammed

Email:

shaffaq.mohammed@councillor.sheffield.gov.uk

Fulwood



**Andrew Sangar –
South West LAC Chair**

Email:

andrew.sangar@councillor.sheffield.gov.uk



Cliff Woodcraft

Email:

cliff.woodcraft@councillor.sheffield.gov.uk



Sue Alston

Email:

sue.alston@councillor.sheffield.gov.uk

All the Councillors can be contacted either via their email addresses or by calling the Town Hall on 0114 2735380

Who else is involved?

Nik Hamilton
Head of Service –
Communities



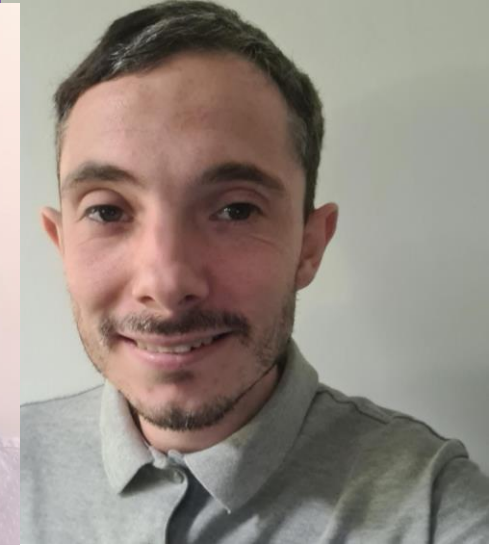
Denise Devoto
SW LAC Manager



Mubarak Hassan
SW Community
Services Officer



George Whitehouse
SW Project Officer



Page 31

The team can be contacted by email on southwestLAC@sheffield.gov.uk or by telephone on 0114 474 3651

The South West LAC webpage can be found via www.sheffield.gov.uk/southwestlac

Social media links can also be found on:-

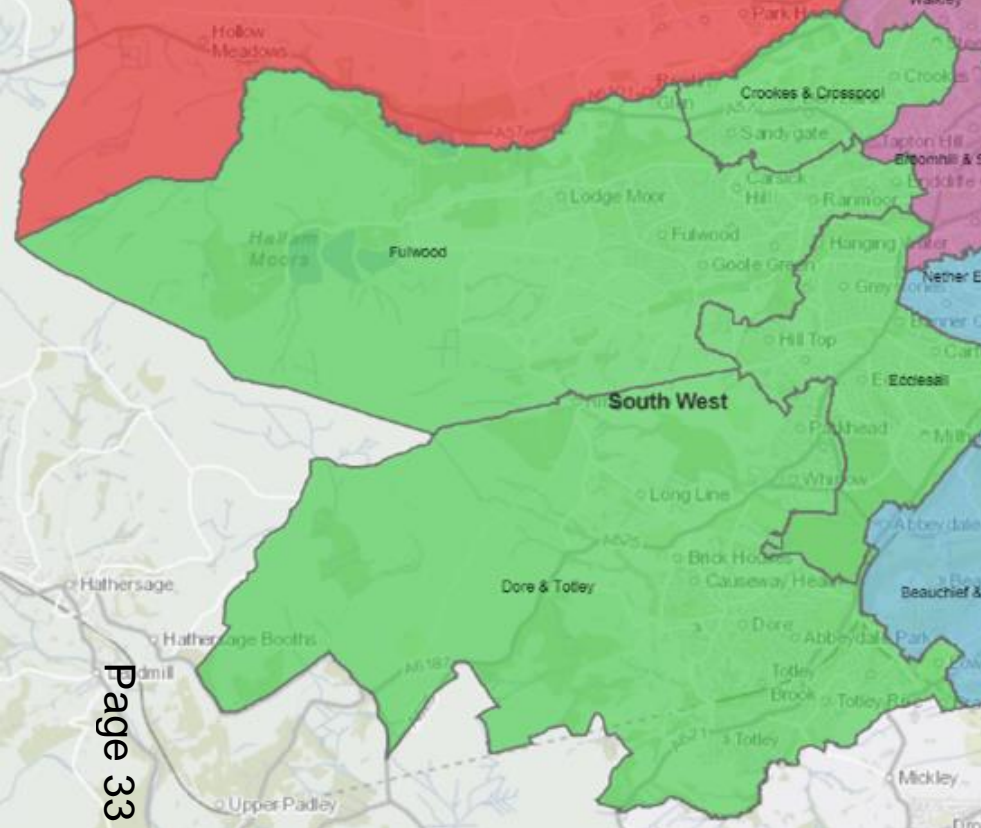
- Facebook - <https://www.facebook.com/SouthWestLACs>
- Twitter – <https://twitter.com/SouthWestSheff>
- Next Door App here - <https://nextdoor.co.uk/agency-detail/england/south-yorkshire/sheffield-city-council/>

Section 2

About the South West Area

Page 32





The South West is one of seven LACs - it consists of four Council wards, which are:

Crookes & Crosspool

includes the neighbourhoods Crookes, Crookesmoor, Crosspool, and Sandygate – the ward profile can be found here:

[Crookes and Crosspool.pdf \(sheffield.gov.uk\)](#)

Dore & Totley

includes the neighbourhoods Bradway, Dore, Totley, Whirlow, and Rural areas - the ward profile can be found here: **[Dore and Totley.pdf \(sheffield.gov.uk\)](#)**

Ecclesall

includes the neighbourhoods Bannercross, Bents Green, Carterknowle, Ecclesall, Greystones, and Millhouses - the ward profile can be found here:

[Ecclesall.pdf \(sheffield.gov.uk\)](#)

Fulwood

includes the neighbourhoods Endcliffe, Fulwood, Lodge Moor, Nether Green, Ranmoor, and Rural areas – the ward profile can be found here:

[Fulwood.pdf \(sheffield.gov.uk\)](#)

Please note the ward profiles are based on the 2011 Census and will be updated once the results of the 2021 are known, estimated to be the summer of 2022. The ward boundaries were changed prior to the 2016 election.



What we know about the area

The South West area of the city has four of the most affluent wards of Sheffield. However, despite the affluence, there are pockets of deprivation in the area where people may be in a vulnerable group through such as being out of work, through disability and other ill health both physically and mentally, or by being part of a low income family such as providing unpaid care.



There are 77,876 people living in the South West area of the city. The ethnicity of the population is predominantly white British, with small numbers of other ethnicities living across the wards. Within the population, there is a significantly high percentage of older people over the age of 65 living in the area. Whilst life expectancy is high in the South West, there are many issues with social isolation and loneliness among the older population – many of which have been exacerbated by the pandemic.

Page 34

The area has a diverse economic and cultural mix with domestic dwellings and several busy shopping areas and other businesses that provide services such as hospitality. Whilst home ownership is high within the area, there are also pockets of social housing and some vulnerable people in the area are asset rich (i.e. own their home) but are cash poor which contributes to the deprivation in the area. Affordability of housing in the area is low with the average house price being circa £365k.



The four wards between them have six of the highest attaining secondary schools across the city, which are in high demand for children and young adults from all over Sheffield to achieve a high standard of education.

There are lots of green spaces and parks across the main urban areas of the South West, but there are also a lot of rural areas that border and extend into the Peak District National Park.



The information on the next page gives a breakdown of some of the demographics for the South West.

What we know about the area..... continued

This page will be updated further from the results of the 2021 Census once known later in the year.

South West has a population of **77,786**

Age
0-15 16.8%
Working Age 62.6%
Age 65+ 20.6%

White British **87%**
Black, Asian, Ethnic Minority **9.5%**
White (Non - British) **3.5%**



Ethnicity
Multi - Ethnic Households **9.9%**

12,400 People are living in deprivation

(measured on one or more of the indices of deprivation, as at 2011 Census, to be updated after 2021 Census results received)



10% of people have no qualifications
(compared with 22% across England)



14% have a disability or limiting long-term illness.
(compared with 18% across England)

Gender 49.3% Male
50.7% Female



This information is as at 2011 Census, to be updated after 2021 Census results received.

Main Employment Sectors

1. Education
2. Health & Social Work
3. Retail

The average household income is **£55,806**
(Compared to England Average of £43,966)

Tenure



78.5% are Homeowners
3.8% Rent from the council
1.8% Rent from Housing Associations
13.4% are Private Renting
2.5% are other

Section 3

The South West LAC Community Plan 22/23

Page 36



The South West Community Plan For 22/23

The Community Plan is based on consultation with the residents, organisations and communities in the SW area. It reflects the priorities of the local community from the consultation and engagement SW LAC team did between August 2021 – February 2022.

Further details on what we did and how the consultation and engagement helped us to identify the themes and priorities can be found further in the reports pack for the 17th March 2022 public meeting.

As specific projects and areas of work within our Community Plan are progressed, we will carry out further community engagement, monitoring and evaluation as required. We will undertake proportionate Equality Impact Assessments to inform the development of projects and areas of work, to ensure we proactively respond to the council's duty to have due regard to the need to eliminate discrimination, harassment and victimisation; advance equality of opportunity; and foster good relations. Where appropriate, this will include targeted work with specific groups of people with shared characteristics, for example age, ethnicity or sexual orientation (defined as protected characteristics in the Equality Act 2010), to help us understand both needs and impact.

To determine what projects the SW LAC could undertake to deliver, the SW LAC has been mindful of the current available funding to address some of the priorities people told us they wanted to address. It is important that the SW LAC manages the expectations of the public when deciding what can be delivered and what can't due to limited resources available at this current time. The available funding for 22/23 is outlined on the next page.

As the SW LAC develops and as further funding becomes available, the SW LAC will continue to evaluate and review the projects that can be delivered in the area. The projects identified will benefit residents in the South West area and contribute to some of the priorities that people told us were important to them.

The South West Community Plan For 22/23

Funding 22/23	Amount	To be used for
SW LAC Budget	£100,000	Addressing some of the priorities identified in the SW LAC community plan, as well some administration costs such as room hire for public meetings etc.
SW Ward Pots	£3,807 – Crookes & Crosspool £3860 – Dore & Totley £3,070 – Ecclesall £3,021 - Fulwood	Supporting voluntary, community and faith sector groups and organisations to deliver activities that meet the priorities of the SW LAC in the individual wards. These figures are to the best of our knowledge at date of publication.
Community Infrastructure Levy (CIL)	£18,883 – Crookes & Crosspool £21,106 – Dore & Totley £15,591 – Ecclesall £17,161 - Fulwood	Undertaking specific ward projects that meet the priorities of the individual wards. These figures are to the best of our knowledge at date of publication. (The amount of funding available for 22/23 has been accrued since Q4 2015/2016 and will be updated as a rolling total at each public LAC meeting).
Fly Tipping and Graffiti Fund	Circa £57,000	Undertaking specific projects to address fly tipping and graffiti that meet the priorities of the SW LAC.

THE THREE THEMES IDENTIFIED WERE:-

Transport and Highways	Includes public transport, active travel (walking and cycling), traffic, speeding, parking, road safety.
Local Environment	Includes waste and recycling, litter, fly tipping, streetscene, parks and green spaces, trees, air quality, climate change.
Community and Neighbourhoods	Includes community and voluntary groups, housing, planning, activities and events, crime and anti-social behaviour, and local businesses.



Theme 1 - Transport & Highways

The SW LAC will work with the Council’s Highways team and local partners to implement the solutions and actions to some of the frequent issues raised as outlined below. Timescales have not been defined for each issue, as the intention is to deliver actions to address as many of the issues in 22/23. If needs be due to lack of resources, some issues/actions may be carried forward into 23/24.

Issue to address	Action	Outcome / Impact expected	Resources required / utilised	Lead Officer / Organisation / Service
ROAD SAFETY				
Speed reduction	Implementation of 20mph zones identified from accidents statistics and agreed as a priority for 22/23.	Reduction in speed across some parts of the area, less accidents as a result of speeding and safer roads.	Road Safety Fund	Denise Devoto – SW LAC Manager Transport and Highways Service
Traffic Calming	Installation of new Vehicle Activated Signs – a minimum of one per ward, to be rotated regularly across sites.	Data provided will highlight where hotspots are for speeding, which will provide safer roads and contribute to a reduction in accidents.	Road Safety Fund	Denise Devoto – SW LAC Manager Transport and Highways Service
Safer routes	Review where new crossings may be required.	Increased safety on roads in the area.	Road Safety Fund	Denise Devoto – SW LAC Manager Transport and Highways Service

Page 39



Theme 1 - Transport & Highways continued

Issue to address	Action	Outcome / Impact expected	Resources required / utilised	Lead Officer / Organisation / Service
ROAD SAFETY				
Community Speed Watch	Explore setting up community speed watch groups to be supported by the South Yorkshire Safer Roads Partnership.	Reduction in speeding, safer roads and reduction in accidents.	LAC budget	Denise Devoto – SW LAC Manager South Yorkshire Police
School Initiatives	Support the Road Safety Team to work with schools to deliver road safety initiatives.	Children more aware of how to be safe on the roads.	Road Safety Fund	Transport and Highways Service
CYCLING AND ACTIVE TRAVEL				
Active travel	Implement the trial Active Neighbourhood scheme in Crookes.	Reduction in car usage and improvement for climate/less pollution and safer roads.	HM Government Active Travel Fund	Transport and Highways Service
Active Travel	Undertake investigation into identifying and exploring opportunities to remove barriers to active travel.	Reduction in car usage and improvement for climate/less pollution and safer roads.	LAC budget HM Government Active Travel Fund	Transport and Highways Service
Active Travel	Explore if further cycle parking and cycle pumps could be installed in the area.	Reduction in car usage and improvement for climate/less pollution and safer roads.	LAC budget HM Government Active Travel Fund	Transport and Highways Service



Theme 1 - Transport & Highways continued

Issue to address	Action	Outcome / Impact expected	Resources required / utilised	Lead Officer / Organisation / Service
CYCLING AND ACTIVE TRAVEL				
Active Travel	Implement the school street scheme for Westways Primary School, as part of the Active Neighbourhood Scheme and experimental traffic regulation order.	Reduction in car usage and improvement for climate/less pollution and safer roads.	LAC budget HM Government Active Travel Fund	Transport and Highways Service
Page 41 Active Travel	Explore the expansion of school street schemes in partnership with local schools.	Reduction in car usage and improvement for climate/less pollution and safer roads.	HM Government Active Travel Fund	Denise Devoto – SW LAC Manager Transport and Highways Service
TRAFFIC AND PARKING				
Inappropriate parking	Explore options for traffic regulation orders across the area and install double yellow lines where required.	Less inappropriate parking, as well as improving road safety.	LAC budget and / or CIL funds	Denise Devoto – SW LAC Manager Transport and Highways Service
Inappropriate parking	Work with the Council's parking enforcement team to rotate areas for enforcement action and raise awareness with residents/ communities.	Less inappropriate parking, as well as improving road safety.	Funded by Parking Services and LAC budget / or CIL funds.	Denise Devoto – SW LAC Manager Parking Enforcement Team



Theme 1 - Transport & Highways continued

Issue to address	Action	Outcome / Impact expected	Resources required / utilised	Lead Officer / Organisation / Service
TRAFFIC AND PARKING				
Inappropriate Parking	Explore with SYP and Parking Services to introduce Operation Parksafe to mitigate against inappropriate parking and support enforcement.	Less inappropriate parking, as well as improving road safety.	LAC budget SYP budget	Denise Devoto – SW LAC manager Parking Services SYP
Page 42 Idling engines	Work with schools to address cars parking with idling engines – including providing signage and enforcement.	Reduction in idling cars and reduction in pollution and improvement for clean air.	LAC budget and / or CIL funds	Denise Devoto – SW LAC Manager Parking Enforcement Team Transport and Highways Service
Car Club	Encourage usage of car clubs through promotion of scheme on SCC's website - City Car Club (sheffield.gov.uk)	Potential to reduce car usage, impacting on climate change.	LAC budget.	Denise Devoto – SW LAC Manager
Disabled parking	Assess the level of abuse of disabled parking, with a view to improving signage and / or enforcement of Council owned car parks.	Improving availability of disabled parking for those eligible.	Funded by Parking Services and LAC budget / or CIL funds.	Denise Devoto – SW LAC Manager Parking Enforcement Team Transport and Highways Service



Theme 2 – Local Environment

The SW LAC will work with the Council’s Environmental Services team, the Council’s contractors and partners to implement the solutions and actions to some of the frequent issues raised as outlined below.

Issue to address	Action	Outcome expected	Resources required / utilised	Lead Officer / Organisation / Service
WASTE, RUBBISH AND BINS				
Recycling	Develop guidance for communities on what can be recycled and where in the area – particularly for items such as batteries, soft plastic and other items that can’t be put in household bins.	Recycling levels improved contributing towards net zero.	LAC budget and / or CIL funds.	Denise Devoto – SW LAC Manager Waste Management Service
Single use plastic (SUP) used by businesses	Establish with business via the business forum / networks being set up for the SW if the LAC can provide support to move away from SUP.	Recycling levels improve, plastic waste reduced - contributing towards net zero.	LAC budget and or CIL funds.	Denise Devoto – SW LAC Manager Waste Management Service
Community Recycling	Consult with communities to recruit volunteers to trial a campaign to recycle more across the area.	Increased recycling and improvement for the environment, including impact on climate change.	LAC budget	Denise Devoto – SW LAC Manager
Communal bins	Explore improving messaging for communal bins/public bins such as in blocks of flats – i.e. not for overspill of household waste.	Reduction in litter and waste across communal areas.	LAC budget and/or CIL funds.	Denise Devoto – SW LAC Manager Highways Management Division



Theme 2 – Local Environment

Issue to address	Action	Outcome expected	Resources required / utilised	Lead Officer / Organisation / Service
WASTE, RUBBISH AND BINS				
Public bins	Review bin locations and consult with communities where additional bins may be required, including additional litter management in green spaces for summer periods.	Reduction in litter and increase in recycling in such as parks and on the highways.	LAC budget and or CIL funds.	Denise Devoto – SW LAC Manager Highways Management Division Parks and Countryside Service
Page 44 Dog fouling	Review signage to be placed near bins particularly in parks and on open spaces, to raise awareness of public health hazard.	More responsible dog ownership and less dog waste left in the area as a public health hazard.	LAC budget and or CIL funds.	Denise Devoto – SW LAC Manager Highways Management Division Parks and Countryside Service
TREES AND LEAVES				
Adopt a tree scheme	Explore options for implementing an ‘Adopt a Tree’ Scheme for the trees in the area’s parks.	Raised profile of the parks in the area and income generation	LAC budget and or CIL funds.	Denise Devoto – SW LAC Manager Parks and Countryside Service
PARKS, GREEN AND OPEN SPACES				
Friends of parks groups (FOGs)	Work with FOGs across the area to support their partnership with the Parks and Countryside Service to deliver projects in parks.	Specific FOG projects delivered in parks.	Ward pot funds	Denise Devoto – SW LAC Manager Parks and Countryside Service



Theme 2 – Local Environment continued

Issue to address	Action	Outcome expected	Resources required / utilised	Lead Officer / Organisation / Service
PARKS, GREEN AND OPEN SPACES				
Friends of Parks Groups (FOGs) and other park/Green Space stakeholders	As part of the Better Parks initiative, Friends of Groups and other Park/Green Space stakeholders and users will be consulted on as standard for related/relevant proposals.	FOGs and other parks/Green space stakeholders consulted with and given the opportunity to comment on related/relevant proposals.	Better Parks Investment	Denise Devoto – SW LAC Manager Parks and Countryside Service
Page 45 Encourage wildflower planting	Review where more wildflowers can be planted on verges, in parks etc. and a reduction in mowing of appropriate grass verges and some areas of parks to create wildflower meadows and support additional perennial planting to reduce annual planting.	More attractive environment, increased bio-diversity, positive impact on climate change.	Better Parks funding LAC budget and/or CIL funds. Highways Management Division	Denise Devoto – SW LAC Manager Parks and Countryside Service Highways Management Division
Play/fitness equipment	Review play and fitness equipment / activities for all age ranges across the area to replace/update where needed if available funding can be sourced..	Improved equipment in parks for all ages to use.	LAC budget and or CIL funds.	Denise Devoto – SW LAC Manager Parks and Countryside Service



Theme 2 – Local Environment continued

Issue to address	Action	Outcome expected	Resources required / utilised	Lead Officer / Organisation / Service
PARKS, GREEN AND OPEN SPACES				
Toilets in parks	Work with Parks and Countryside service to install toilets as part of leases that are renewed for cafes etc.	Amenities improved for all age groups attending parks.	Better Parks Investment	Denise Devoto – SW LAC Manager Parks and Countryside Service
Promotion of parks	Explore improving signage in parks and information regarding their history, as well as promoting what public transport options there are to get to them.	More people able to enjoy the areas parks and green spaces.	LAC budget Parks budget	Denise Devoto – SW LAC Manager Parks and Countryside Service
Energy use in parks	Support initiatives to increase electrification points in Parks.	Positive impact on climate change and reducing the need to use generators etc. in parks.	Better Parks Investment.	Denise Devoto – SW LAC Manager Parks and Countryside Service
STREET / ENVIRONMENTAL CLEANING AND MAINTENANCE				
Litter	Support litter picking groups through raising their profile, encouraging volunteers.	Reduction in litter across the area and cleaner environment.	Ward pot funding, LAC budget.	Denise Devoto – SW LAC Manager
FLY TIPPING AND GRAFFITI				
Graffiti	Identify hotspots and work with young residents / artists to produce street art in the area.	Reduced level of graffiti / prevention of graffiti.	Fly tipping and graffiti budget.	Denise Devoto – SW LAC Manager Environmental Services



Theme 2 – Local Environment continued

Issue to address	Action	Outcome expected	Resources required / utilised	Lead Officer / Organisation / Service
FLY TIPPING AND GRAFFITI				
Fly tipping	Identify hotspots affected by fly tipping to take required action, such as provision of mobile cameras and enforcement.	Reduction in fly tipping and successful prosecutions.	Fly tipping and graffiti budget.	Denise Devoto – SW LAC Manager Environmental Services
Page 47 Bring sites	Explore what improvements can be made to Old Fulwood Road Bring Site and Redmires Road Bring Site to prevent an overspill of waste and fly tipping.	Improved 'Bring Sites' with increased facilities, improved signage and less waste fly tipped.	Fly tipping and graffiti budget.	Denise Devoto – SW LAC Manager Environmental Services
Bring sites	Consult with communities to see if there is a demand for additional Bring Sites in the area.	Increased options to recycle more items in the area, impacting on climate change.	Fly tipping and graffiti budget.	Denise Devoto – SW LAC Manager Environmental Services
OTHER				
Community renewable energy	Consult with communities to establish if a renewable energy project can be established and identify volunteers to establish it.	Positive impact on climate change.	LAC budget.	Denise Devoto – SW LAC Manager



Theme 3 – Community and Neighbourhoods

The SW LAC will work with various services across the Council, statutory partners, and community organisations and groups to implement the solutions and actions to some of the frequent issues raised as outlined below.

Issue to address	Action	Outcome expected	Resources required / utilised	Lead Officer / Organisation / Service
REDUCE ASB, YOUTH GANGS AND NUISANCE				
Lack of youth provision Page 48	Work with young residents and local Youth Services Teams and the voluntary, community and faith sector to map current provision to identify gaps and areas of need to help meet their aspirations and develop a scheme of local activities.	Better understanding of youth provision, gaps and provision of schedule activities that is engaging for young people.	Youth Service funding, LAC budget and / or CIL funds.	Denise Devoto – SW LAC Manager Youth Services
ASB hotspots	Use the area profiles provided by Community Safety Team, alongside other intelligence and other partners/stakeholders, to ensure that resources are targeted and coordinated across the area.	Targeted intervention undertaken to reduce ASB and youth gangs.	ASB team budget Community Safety budget SYP	Denise Devoto - SW LAC Manager ASB Team Community Safety Team



Theme 3 – Community & Neighbourhoods continued

Issue to address	Action	Outcome expected	Resources required / utilised	Lead Officer / Organisation / Service
REDUCE CRIME AND ADDRESS PERCEPTION AND FEAR OF CRIME				
Neighbourhood watch groups	Support and maintain links established with neighbourhood watch groups.	Reduction in levels of crime / ASB and increased feelings of safety.	Ward pots and LAC budget.	Denise Devoto – SW LAC Manager Community Safety Team
Page 49 Awareness of crime / ASB	Work with Safer Neighbourhood Partnership, South Yorkshire Police and other agencies to raise awareness on prevention of crime and anti-social behaviour, as well as supporting ASB initiatives in hotspots such as the Bolehills Park, Endcliffe Park, Green Oak Park and Millhouses Park.	Reduction in levels of crime / ASB and increased feelings of safety.	SYP budgets/ LAC budget.	Denise Devoto – SW LAC Manager Safer Neighbourhood Partnership Community Safety Team South Yorkshire Police ASB Team Parks and Countryside Service
Awareness of crime / ASB	Establish planned and targeted communications about crime prevention.	Reduction in levels of crime / ASB and increased feelings of safety.	LAC budget and other funding streams with advice and support from the Community Safety Team	Denise Devoto – SW LAC Manager Community Safety Team



Theme 3 – Community & Neighbourhoods continued

Issue to address	Action	Outcome expected	Resources required / utilised	Lead Officer / Organisation / Service
REDUCE CRIME AND ADDRESS PERCEPTION AND FEAR OF CRIME				
Reduce crime against students	Work with universities and the Student Neighbourhood Forum to support students to reduce crime in their communities.	Reduction of crime in student communities.	LAC budget and / or CIL funding.	Denise Devoto – SW LAC Manager Community Safety Team
Page 50 Violence against women and girls	Work with groups and partners to identify the risk areas and develop collaborative plans on how things may be addressed/ improved for this area. Such partners would be Our Bodies, Our Streets; Know The Line, and White Ribbon.	Women and girls feel safer and there is a reduction in this area of crime, and behaviour changes are made.	LAC budget and / or CIL funding	Denise Devoto – SW LAC Manager Domestic Abuse Service Community Safety Team SYP
Design out crime	Explore how we can learn from best practice for high quality public spaces, especially in new developments, that makes it harder for crimes to be committed in the area.	Reduction in levels of crime / ASB and increased feelings of safety.	LAC budget and other funding streams with advice and support from the Community Safety Team	Denise Devoto – SW LAC Manager Community Safety Team



Theme 3 – Community & Neighbourhoods continued

Issue to address	Action	Outcome expected	Resources required / utilised	Lead Officer / Organisation / Service
REDUCE CRIME AND ADDRESS PERCEPTION AND FEAR OF CRIME				
Low level crime	Establish two stakeholder groups with SYP and other relevant partners such as Housing and Youth Services to deal with low level crime issues.	Reduction in levels of low level crime.	LAC budget	Denise Devoto – SW LAC Manager Council Services SYP
ENCOURAGE COMMUNITY INVOLVEMENT				
Isolation and loneliness	Continue to work with our People Keeping Well (PKW) partner, Age UK, to support and identify isolated and lonely individuals, including exploring intergenerational activities.	Support network in place to help lonely and isolated individuals.	PKW funding, ward pot funding and / or LAC budget.	Denise Devoto – SW LAC Manager Age UK, PKW partner
Isolation and loneliness	Work with Youth Services and schools to identify isolated young residents, especially those affected by the impact of Covid or mental ill health, including exploring intergenerational activities.	Support network in place to help lonely and isolated individuals.	Youth Services budget, ward pot and / or LAC budget.	Denise Devoto – SW LAC Manager Youth Services

Page 51



Theme 3 – Community & Neighbourhoods continued

Issue to address	Action	Outcome expected	Resources required / utilised	Lead Officer / Organisation / Service
ENCOURAGE COMMUNITY INVOLVEMENT				
Volunteering Page 52	Raise awareness of volunteering opportunities for all age groups, considering varied ways to communicate with different groups of people, including linking up with Sheffield University Sheffield Volunteering	Increase in community feel and pride in local area.	LAC budget	Denise Devoto – SW LAC Manager
Review community groups and activities	Support AGE UK PKW in undertaking a mapping exercise to establish what community groups / stakeholders in the area and what they do/offer and encourage collaboration and sharing best practice between groups.	Local information available for people to find groups / activities to be involved with.	LAC budget PKW budget	Denise Devoto – SW LAC Manager Age UK PKW Partner
Support new groups	Provide support to establish new community groups where a need is identified.	New groups established to benefit the community and individuals.	Ward pot and / or LAC budget.	Denise Devoto – SW LAC Manager
Westminster Estate	Explore improving facilities for young children on the estate.	More activities and options for young children to be involved in.	LAC budget	Denise Devoto – SW LAC Manager



Theme 3 – Community & Neighbourhoods continued

Issue to address	Action	Outcome expected	Resources required / utilised	Lead Officer / Organisation / Service
INCREASE USE OF COMMUNITY ASSETS				
Develop community hubs	Work with all groups across the area to share information and develop community hubs, such as community libraries.	Increase in community feel and information available.	LAC budget	Denise Devoto – SW LAC Manager
Map community buildings	Identify all the Council's assets and other community buildings within the South West that are available to be used for community activities/groups etc and link into the Age UK PKW mapping exercise.	Increase of assets available for people to use for activities etc.	LAC budget	Denise Devoto – SW LAC Manager
BUSINESSES AND LOCAL ECONOMY				
Business Network	Set up business forums/networks across the area.	Improved local networks to share best practice and provide support across businesses.	LAC budget	Denise Devoto – SW LAC Manager

Page 3

Summary of issues not included in the SW community plan

On this page we have included issues / actions suggested by the SW LAC and the community which we have not included in the SW LAC community plan. Some of these are issues / actions we are proposing to take forward to the appropriate committees once new Governance arrangements are in place for the Council and following further discussion at future SW LAC meetings. For issues we are not taking forward, we have advised why we are unable to at this stage.

Issue to address	Action suggested	Response to ideas suggested
Road Safety Page 54	Could all city be on 20mph as a default rather than specific neighbourhoods?	There is strict criteria that must be met for 20 mph zones, therefore are unable to be applied to all categories of roads in the city.
	Install more speed bumps.	These are often very expensive and unaffordable in schemes; but we will look at particular cases, such as new developments.
	Need to make it easier for highways requests to be considered – could the LAC be the area this happens?	To be updated once the new Governance arrangements are in place for the new committee system.
Active travel	Identify safe cycling routes and explore safe parking for cycles.	To consider at a forthcoming LAC meeting to agree transport priorities for the SW and recommendations to make to the Transport and Highways Committee.
	Encourage people to use cars less.	
	Design cycle routes in accordance with current standards to separate pedestrians and cyclists where required.	
Traffic and Parking	Raise awareness for all residents on how they report local traffic related issues.	To consider at a forthcoming LAC meeting to agree transport priorities for the SW and recommendations to make to the Transport Committee.
	Assess demand where areas would benefit from residential parking schemes in line with the Council's policy.	

Summary of issues not included in the SW community plan continued

Issue to address	Action suggested	Response to ideas suggested
Endcliffe Park car park	Explore how to reduce the use of Endcliffe Park car park being used by commuters.	There is currently pay and display in place which reduces this already.
Public Transport	Use our influence to improve bus services.	Comments from this consultation will be fed into the review that the South Yorkshire Mayoral Combined Authority is carrying out as the Governing body. They will also be considered at a forthcoming LAC meeting to agree transport priorities for the SW and recommendations to make to the Transport and Highways Committee. The Hope Valley Capacity Scheme is underway to improve the station / lines available for use. Further details can be found here The Hope Valley Railway Upgrade - Network Rail .
	Improving bus shelters and information by liaising with appropriate organisations.	
	More affordable buses/trams needed.	
	Can an oyster card system be introduced?	
	Certain areas need a better provision, which is reliable and has information re bus times etc.	
	Explore potential to extend Supertram for Abbeydale Road corridor.	
Waste, rubbish and bins	Explore options to increase recycling.	To consider at a forthcoming LAC meeting to agree recycling priorities for the SW and recommendations to make to the Environment Committee as a citywide strategy.
	Develop a smart scheme for recycling to stop large items being disposed of.	
	Explore having food waste bins, particularly for such as schools and takeaways.	

Summary of issues not included in the SW community plan continued

Issue to address	Action suggested	Response to ideas suggested
Trees and leaves	Better leaf clearance in late autumn.	Citywide issue, to be considered by the Streetscene Committee.
	Better maintenance of street trees.	
	Need to understand who is responsible for clearing leaves and the cycle they are cleared. Is leaf waste compostable?	
Green spaces	Increased emphasis on the importance of the preservation and protection of the existing Sheffield Green Belt to prevent over development.	This falls within the remit of planning and The Local Plan, so has been referred to planning to respond.
Streetscene, footpaths, lighting etc.	Footpaths to be kept clear of encroaching plants/hedges etc.	Citywide issue, to be considered by the Streetscene Committee.
	Explore ability to dim street lights in specific areas.	
	Review gritting routes and grit bin locations.	
Other ideas / priorities for Local Environment	Can we review planning policies to protect green areas?	These points are covered by the SCC consultation for the new Local Plan and will be fed into any upcoming neighbourhood plans.
	Include swift bricks in new developments/renovations.	
	Influence planning applications for new builds/extensions to be net zero.	
	What about 'Renew shops' like Greater Manchester has? Renew Shops - Recycle for Greater Manchester : Recycle for Greater Manchester	
Reduce crime and address the perception and fear of crime.	Strong desire to see more police on patrol.	It is a priority for the PCC to increase numbers and national recruitment is underway.

Summary of issues not included in the SW community plan continued

Issue to address	Action suggested	Response to ideas suggested
Community buildings pricing policy	LACs should identify and publicise existing community assets, and work to establish a common and affordable pricing policy.	The Council is unable to set prices for privately owned community buildings. However, for Council buildings, this is to be reviewed corporately on a city wide basis.
Air quality	Support for continued monitoring of air quality and exploring ways to improve it, linked to the SCC Air Quality Action Plan (2025).	Citywide issue, to be considered by the Environment Committee.

What next?

The South West LAC will:-

- Continue to work with all LACs across the City to determine which further powers and budgets can be devolved to LACs.
- Develop a delivery plan to undertake the actions outlined in this Community Plan to be achieved in 22/23.
- Hold four public meetings per year and provide an update on the progress of the Community Plan.
- Hold single issue meetings on topics of local interest where and when appropriate.
- Continue to engage and consult with communities to review priorities for the area.
- Provide an annual report on the Community Plan and progress against it to Full Council every year.
- Represent the interest of its communities with the Council and with other bodies / organisations as appropriate to achieve the objectives of the Community Plan.



This document can be supplied in alternative formats, please contact the team to request a copy.

Sheffield City Council - Local Area Committees:
part of the Empowering Communities Programme

www.sheffield.gov.uk/home/your-city-council/local-area-committees



Email - SouthWestLAC@sheffield.gov.uk

Telephone - 0114 474 3651

This page is intentionally left blank



SW LAC CONSULTATION AND ENGAGEMENT REPORT

Crookes & Crosspool - Dore & Totley - Ecclesall - Fulwood

Contents

This SW LAC consultation and engagement report includes information from the draft Community Plan that was presented at the online public event on 20th January 2022. It is also a record of the discussions, ideas and comments discussed with attendees in the workshops and written feedback received after the meeting up to 28th February 2022.

Page 62

What are Local Area Committees (LACs)?	Section 1
About the South West	Section 2
How we engaged with the South West community	Section 3
What you said about the South West area and what we found out through the engagement	Section 4
The suggested themes, priorities and solutions/ideas identified through engagement and consultation	Section 5

Section 1

What are Local Area Committees (LACs)?

Page 63



Local Area Committees (LACs) are a way for people to get involved in making a difference to their local communities. Some budgets have already been devolved to the LACs for them to be used on issues and priorities that residents and communities have told us are important to them.

LACs are a chance for people to influence decision making, share their opinion and contribute to positive changes in their community. They are an opportunity for people to say what they would like to see improved in their area.

Whilst LACs have some initial devolved powers, the devolution of further powers will continue to evolve.

Further details about LACs can be found here - www.sheffield.gov.uk/home/your-city-council/local-area-committees



**Local Area
Committees**

Engage · Empower · Enable

Who are the Committee Members?

The South West Local Area Committee is made up of twelve elected Councillors, representing the four Council wards included within the South West LAC.

Crookes & Crosspool



Mohammed Mahroof

Email:

mohammed.mahroof@councillor.sheffield.gov.uk

Ruth Milsom

Email:

ruth.milsom@councillor.sheffield.gov.uk

Tim Huggan

Email:

tim.huggan@councillor.sheffield.gov.uk

Dore & Totley



Colin Ross

Email:

colin.ross@councillor.sheffield.gov.uk



Joe Otten - South West LAC Vice Chair

Email:

joe.otten@councillor.sheffield.gov.uk



Martin Smith

Email:

martin.smith@councillor.sheffield.gov.uk

Who are the Committee Members?

Ecclesall



Barbara Masters

Email:

barbara.masters@councillor.sheffield.gov.uk



Roger Davison

Email:

roger.davison@councillor.sheffield.gov.uk



Shaffaq Mohammed

Email:

shaffaq.mohammed@councillor.sheffield.gov.uk

Fulwood



**Andrew Sangar –
South West LAC Chair**

Email:

andrew.sangar@councillor.sheffield.gov.uk



Cliff Woodcraft

Email:

cliff.woodcraft@councillor.sheffield.gov.uk



Sue Alston

Email:

sue.alston@councillor.sheffield.gov.uk

All the Councillors can be contacted either via their email addresses or by calling the Town Hall on 0114 2735380

Who else is involved?

Nik Hamilton
Head of Service –
Communities



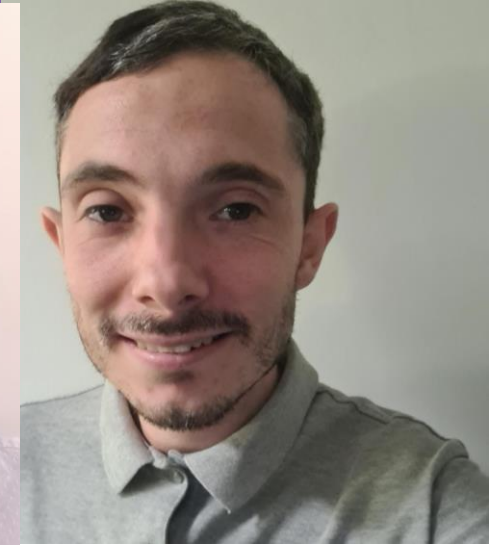
Denise Devoto
SW LAC Manager



Mubarak Hassan
SW Community
Services Officer



George Whitehouse
SW Project Officer



Page 67

The team can be contacted by email on southwestLAC@sheffield.gov.uk or by telephone on 0114 474 3651

The South West LAC webpage can be found via www.sheffield.gov.uk/southwestlac

Social media links can also be found on:-

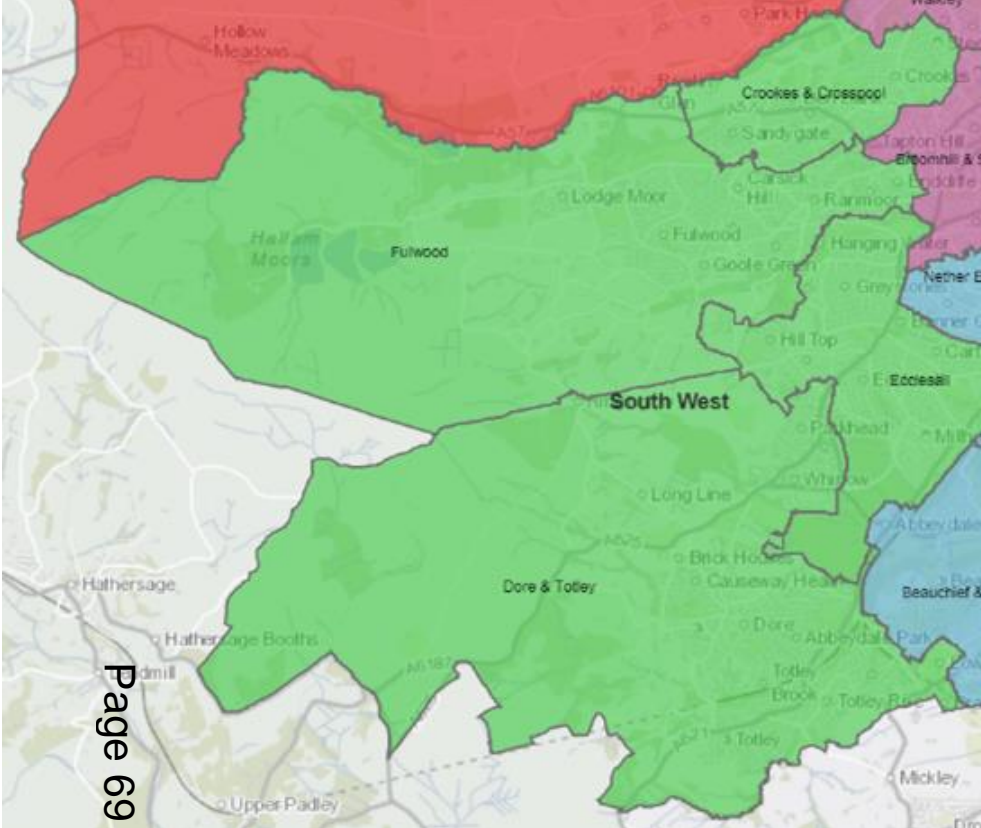
- Facebook - <https://www.facebook.com/SouthWestLACs>
- Twitter – <https://twitter.com/SouthWestSheff>
- Next Door App here - <https://nextdoor.co.uk/agency-detail/england/south-yorkshire/sheffield-city-council/>

Section 2

About the South West Area

Page 68





The South West is one of seven LACs - it consists of four Council wards, which are:

Crookes & Crosspool

includes the neighbourhoods Crookes, Crookesmoor (part), Crosspool, and Sandygate – the ward profile can be found here:

[Crookes and Crosspool.pdf \(sheffield.gov.uk\)](#)

Dore & Totley

includes the neighbourhoods Bradway, Dore, Totley, Whirlow, and Rural areas - the ward profile can be found here: **[Dore and Totley.pdf \(sheffield.gov.uk\)](#)**

Ecclesall

includes the neighbourhoods Bannercross, Bents Green, Carterknowle, Ecclesall, Greystones, and Millhouses - the ward profile can be found here:

[Ecclesall.pdf \(sheffield.gov.uk\)](#)

Fulwood

includes the neighbourhoods Endcliffe, Fulwood, Lodge Moor, Nether Green, Ranmoor, and Rural areas – the ward profile can be found here:

[Fulwood.pdf \(sheffield.gov.uk\)](#)

Please note the ward profiles are based on the 2011 Census and will be updated once the results of the 2021 are known, estimated to be the summer of 2022. The ward boundaries were changed prior to the 2016 election.



What we know about the South West area

The South West area of the city has four of the most affluent wards of Sheffield. However, despite the affluence, there are pockets of deprivation in the area where people may be in a vulnerable group through such as being out of work, through disability and other ill health both physically and mentally, or by being part of a low income family such as providing unpaid care.



There are 77,876 people living in the South West area of the city. The ethnicity of the population is predominantly white British, with small numbers of other ethnicities living across the wards. Within the population, there is a significantly high percentage of older people over the age of 65 living in the area. Whilst life expectancy is high in the South West, there are many issues with social isolation and loneliness among the older population – many of which have been exacerbated by the pandemic.

Page 7

The area has a diverse economic and cultural mix with domestic dwellings and several busy shopping areas and other businesses that provide services such as hospitality. Whilst home ownership is high within the area, there are also pockets of social housing and some vulnerable people in the area are asset rich (i.e. own their home) but are cash poor which contributes to the deprivation in the area. Affordability of housing in the area is low with the average house price being circa £365k.



The four wards between them have six of the highest attaining secondary schools across the city, which are in high demand for children and young adults from all over Sheffield to achieve a high standard of education.

There are lots of green spaces and parks across the main urban areas of the South West, but there is also a lot of rural areas that border and extend into the Peak District National Park.



The information on the next page gives a breakdown of some of the demographics for the South West.

What we know about the South West area..... continued

This page will be updated further from the results of the 2021 Census once known later in the year.

South West has a population of **77,786**

Age
0-15 16.8%
Working Age 62.6%
Age 65+ 20.6%

White British **87%**
Black, Asian, Ethnic Minority **9.5%**
White (Non - British) **3.5%**



Ethnicity
Multi - Ethnic Households **9.9%**

12,400 People are living in deprivation

(measured on one or more of the indices of deprivation, as at 2011 Census, to be updated after 2021 Census results received)



10% of people have no qualifications (compared with 22% across England)



14% have a disability limiting long-term illness. (compared with 18% across England)

Gender 49.3% Male 50.7% Female



This information is as at 2011 Census, to be updated after 2021 Census results received.

Main Employment Sectors

- 1. Education
- 2. Health & Social Work
- 3. Retail

The average household income is **£55,806**

(Compared to England Average of £43,966)

Tenure



78.5% are Homeowners
3.8% Rent from the council
1.8% Rent from Housing Associations
13.4% are Private Renting
2.5% Other

Section 3

How we engaged with the South West community

Page 72



What engagement we did ...

Page 73



16th September 2021 – SW LAC Public Meeting held at Greystones School

- We held our first public meeting in September 2021 to launch the SW LAC.
- We created a contact database which includes Voluntary, Community and Faith Sector (VCFS) groups/organisations, partners and residents to either correspond with by email or by post. Updates also sent via the SW GovDelivery email distribution list to approx. 7,500 people.
- We published regular press releases on Sheff News [Home | SheffNews](#). and also in other local publications including: Bradway Bugle; Dore to Door; Totley Independent; Southside and Westside; Grapevine and S10 Magazine.
- We delivered a citywide newsletter to all residential properties to introduce LACs and provided members of the public with contact details for all LAC teams.

What engagement we did ... continued

- Posted on our social media pages: Facebook, Twitter and Next Door. We will continue to publish items to promote activity and future public LAC meetings, as well as items of interest relating to LACs and other community events.
- Kept our webpages up to date – see: <https://www.sheffield.gov.uk/home/your-city-council/south-west-local-area-committee>
- Circulated/promoted a city-wide Citizen Space survey on relevant sites and sent to our contacts database, including GovDelivery list.
- Sent paper surveys to people who requested them. Delivered surveys to a variety of businesses, shops, cafes and all churches across the SW.
- Contacted all groups/organisations on our contact list for the team to attend meetings/events to discuss LACs and the survey.

Page 74



Tell us what matters to you

Sheffield Council has set up 7 Local Area Committees, to help us better listen and connect with local communities.

We will be talking to local communities over the coming months to shape how the Local Area Committees will work, but we want them to have real power to address local issues. The Local Area Committees will be led by local Councillors. They will offer a wide range of opportunities for involvement, recognising that people want to get involved a different levels and in different ways. This will include holding regular public meetings in the community. Right now we really want to hear from local communities about what matters to you, so please share your views.

Please tell us a little bit about you...

My neighbourhood is

Please tick where applicable

I consider myself to be a disabled person	<input type="checkbox"/>	Yes	<input type="checkbox"/>	No
I belong to a Black, Asian or Minority Ethnic Group	<input type="checkbox"/>	Yes	<input type="checkbox"/>	No
My age group	I am under 20 years old	<input type="checkbox"/>	I am between 21-35	<input type="checkbox"/>
	I am between 36-50	<input type="checkbox"/>	I am over 50	<input type="checkbox"/>
My gender	I am male	<input type="checkbox"/>	I am female	<input type="checkbox"/>
	I am non binary / other <input type="checkbox"/>			
I am a member of an LGBT+ community	<input type="checkbox"/>	Yes	<input type="checkbox"/>	No
	Do you look after a family member / friend as an unpaid carer?	<input type="checkbox"/>	Yes	<input type="checkbox"/>



Engagement will be a continuous part of the LAC's role – your comments, feedback and ideas are an integral part of our work in the SW area.

Section 4

What you said about the South West area and what we found through engagement

Page 75



Number of completed surveys received, and the Council ward the South West respondents were from...

We had 1,303 responses for the South West LAC area

1,155 responses were online surveys
148 were from paper surveys

Page 76

Wards where respondents live

Crookes & Crosspool	25%	Dore & Totley	21%
Ecclesall	37%	Fulwood	17%

Who replied to our survey in the South West?

The information on this page shows some of the demographics of the 1303 people in the South West who responded to the survey and has been obtained from the equalities questions asked in the survey. This is different from the demographics information that is provided on page 10 which is provided for the whole population of 77,786 people living in the South West.

What tenure type did respondents have?

- 80.5% homeowners.
- 0.8% rent from the Council.
- 0.5% rent from other social landlords.
- 3.5% rent from a private landlord.
- 0.9% lived with family.
- 3.8% didn't say.

What were the ages of the respondents?

- 2% under the age of 20.
- 58% aged between 20-64.
- 40% aged 65 or over.

What were the genders of the respondents?

- 40% male.
- 57% female.
- 0.5% non-binary / other.
- 2.5% preferred not to say.

Other information for the respondents

- 13% said they have a disability or a long term condition or illness that is limiting to their life.
- 15% said they are unpaid carer.
- 49% had no religion or belief, 45% followed a religion and 6% preferred not to say.
- 88% were white British, 4% were Black, Asian, Ethnic Minority and 2% said they were white Non-British – 6% of people preferred not to say.

It is important to note that whilst this page gives information on the respondents to the survey, the LAC will consider all demographic information available for South West population to inform any decisions that they will make on how budgets are spent on the priorities identified for the South West.

What respondents said

Likes



- **Countryside, Parks, Green spaces and lots of trees.**
- **Close to the City and Peak District.**
- **Not far from local shops and amenities.**
- **Friendly neighbours, community and good atmosphere.**
- **Good schools.**
- **Responsive Councillors.**
- **Quiet and safe.**
- **Good buses.**

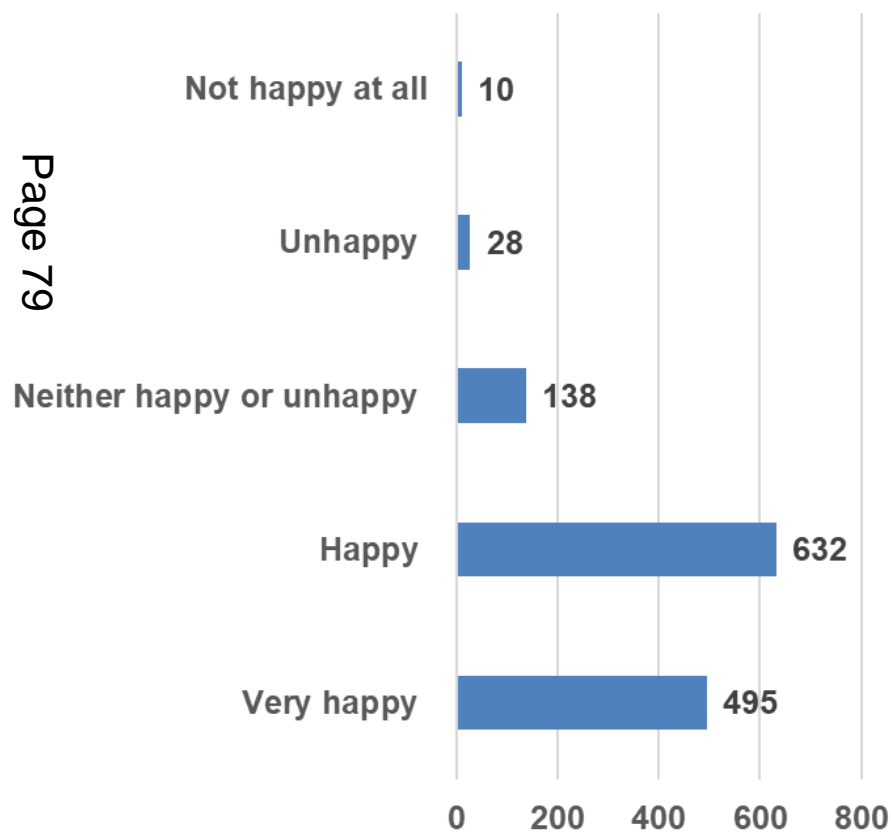
Improvements



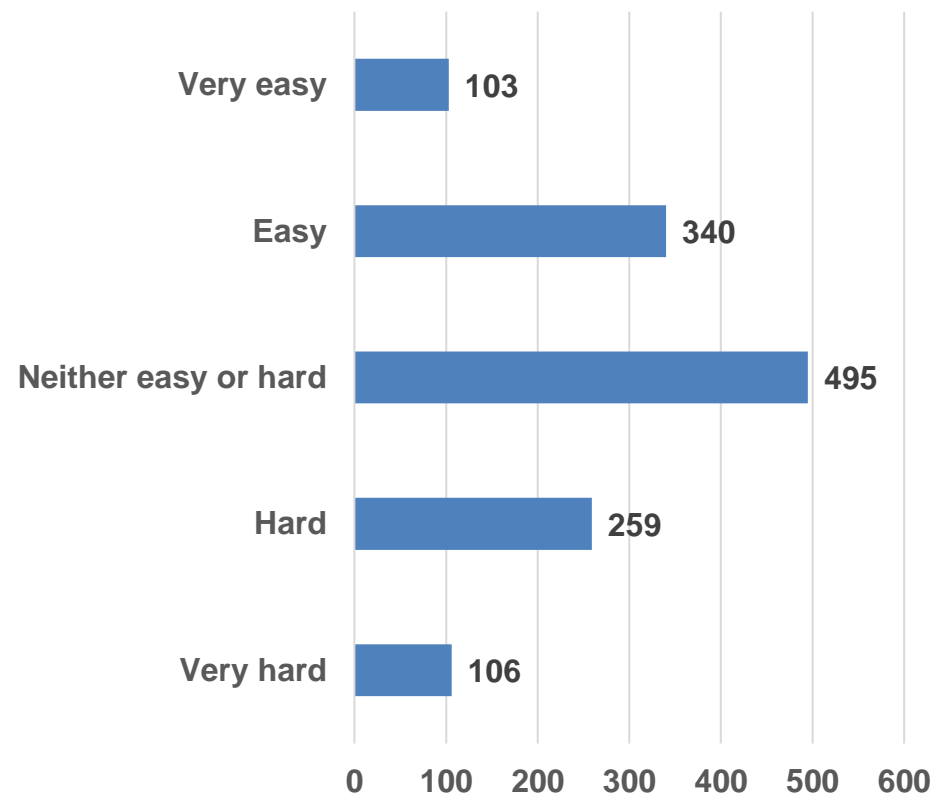
- **More frequent buses.**
- **Stop speeding vehicles.**
- **Improve recycling options to include more plastic etc.**
- **Improve street and footpath maintenance.**
- **Don't over develop existing housing sites and keep control of housing density.**
- **Increase police presence and patrols.**
- **Reduce anti-social behaviour (ASB) and crime.**

What respondents said...continued

How happy do you feel with your local area where you live?



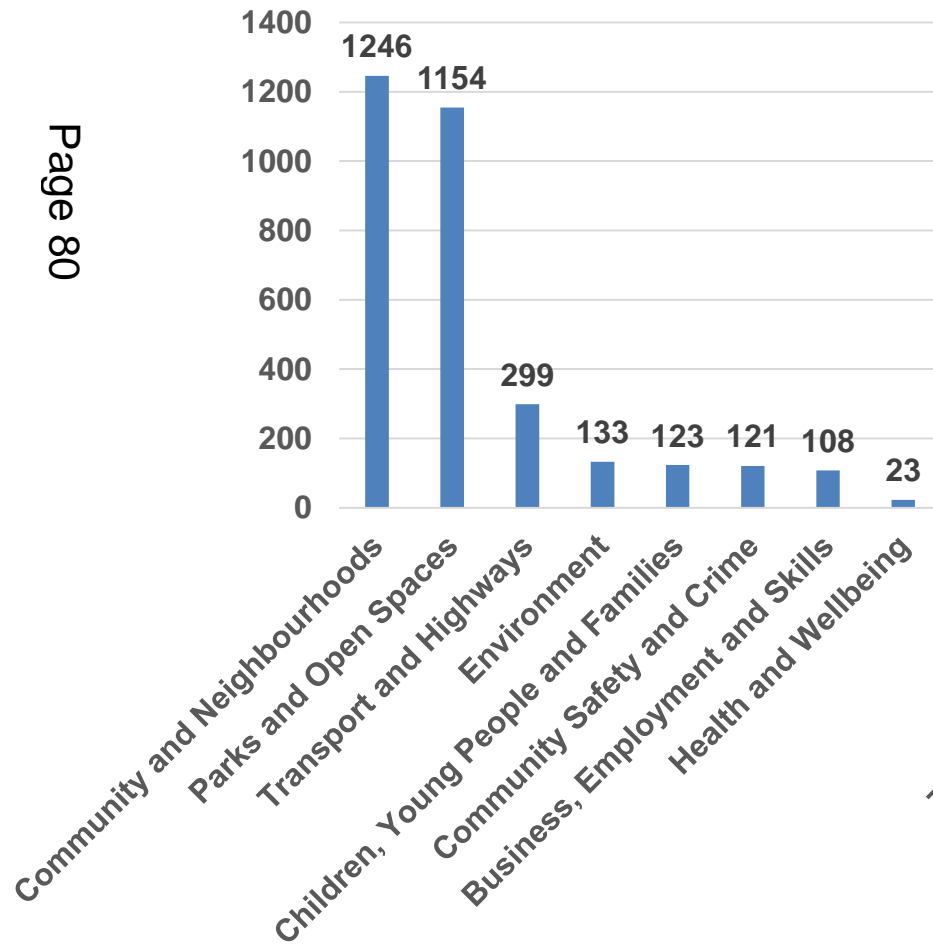
How easy is it to find out about news in your local area? e.g. events / activities



Key themes

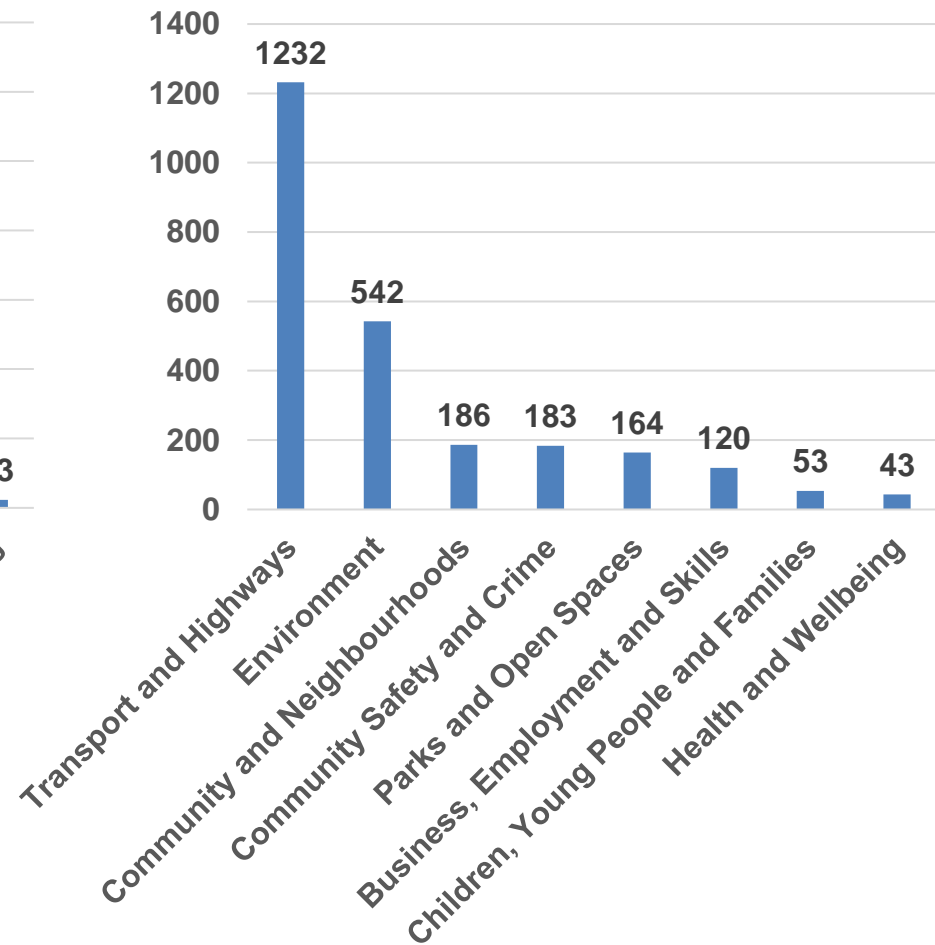
Likes

These are the areas respondents said they liked.



Improvements

These are the areas respondents said needed improving.



Section 5

The suggested community priorities and themes identified through engagement and consultation

Page 81



Priorities

The three priority themes that the survey identified are:



Transport & Highways



Local Environment

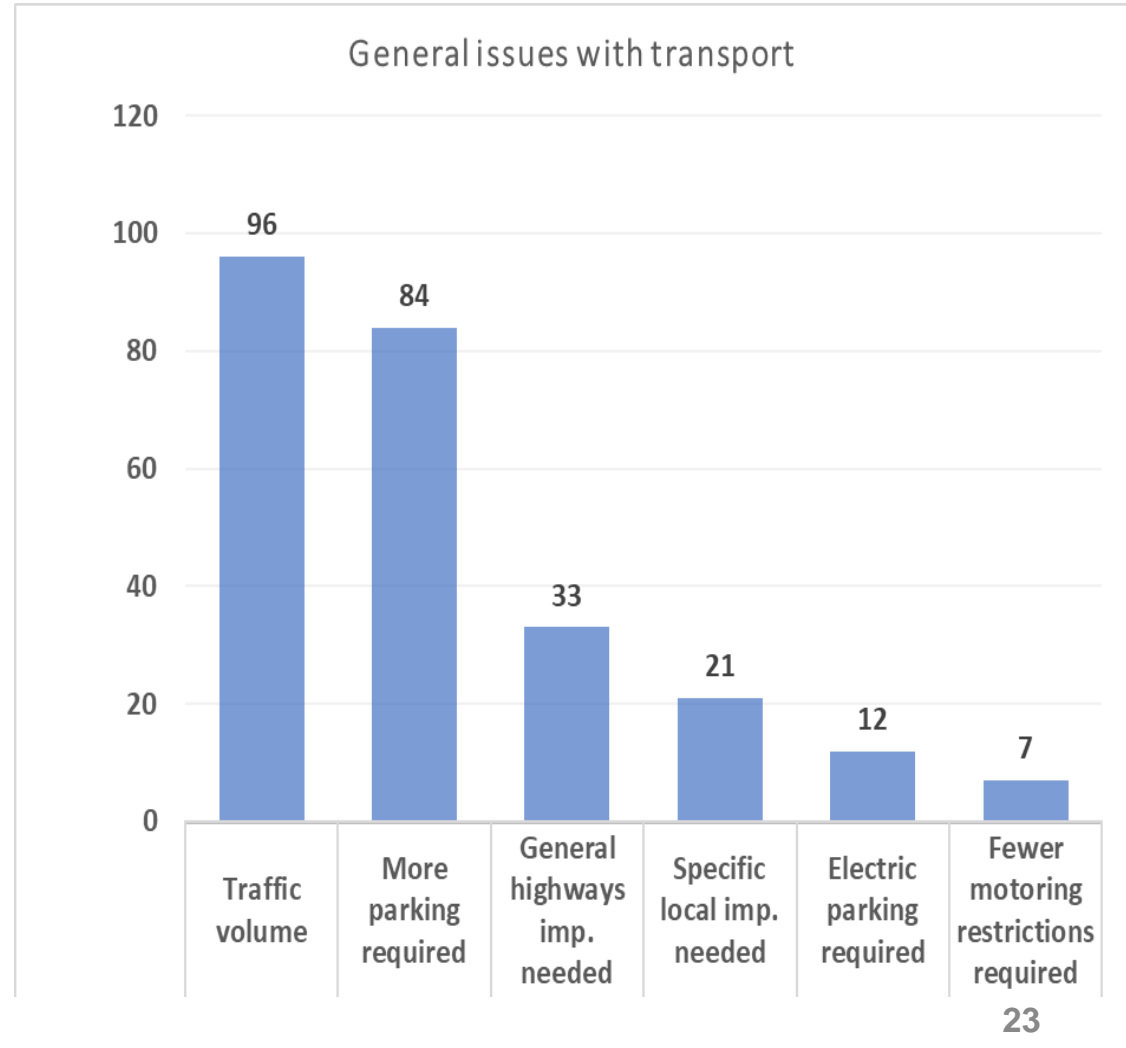
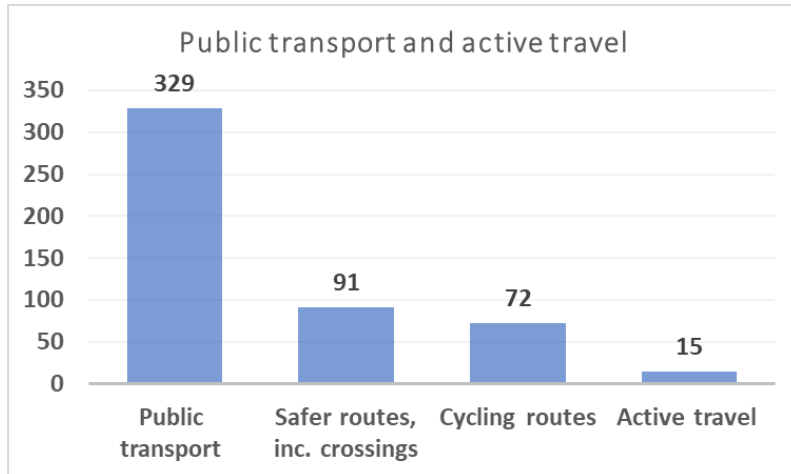
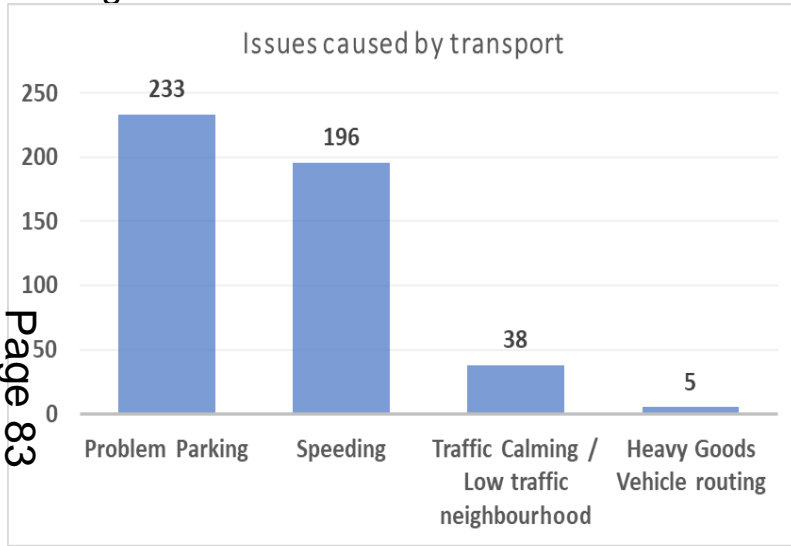


Community & Neighbourhoods

Transport & Highways

Under this theme, these are the areas that people said needed to be improved and a priority to address. They were grouped into three key areas – 1) issues caused by transport; 2) general issues with transport; 3) public transport and active travel, which have been split down further to show the responses in the 3 categories.

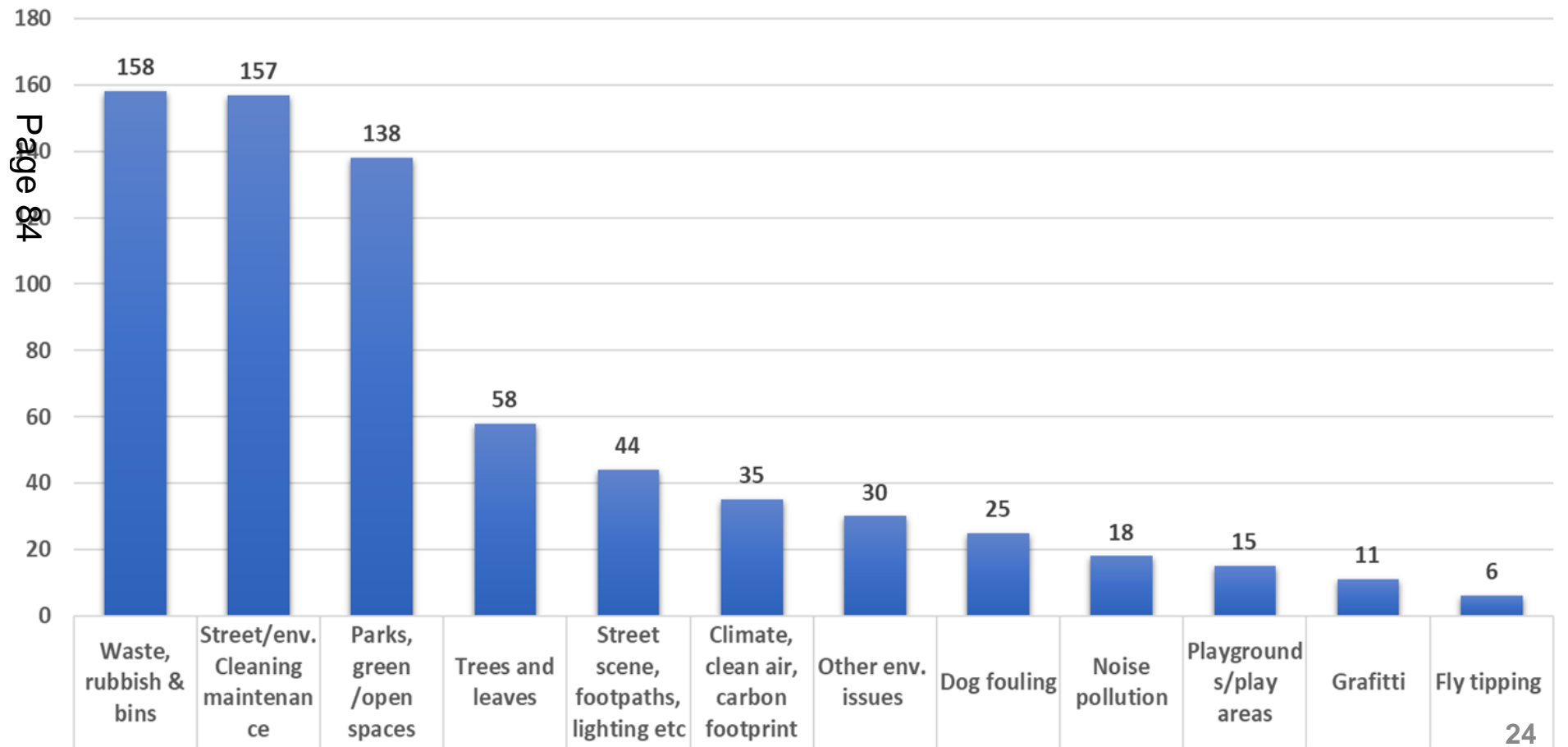
Page 83



Local Environment

Under this theme, respondents raised concerns in respect of insufficient clearance of autumn leaves, leading to slippery footpaths, in particular. They also raised concerns about potential flood risk issues due to reductions in the frequency of gulley cleaning. Respondents were also keen to encourage greater recycling options, including the ability to recycle more plastics and other recyclable materials. Tackling fly-tipping and graffiti were also highlighted.

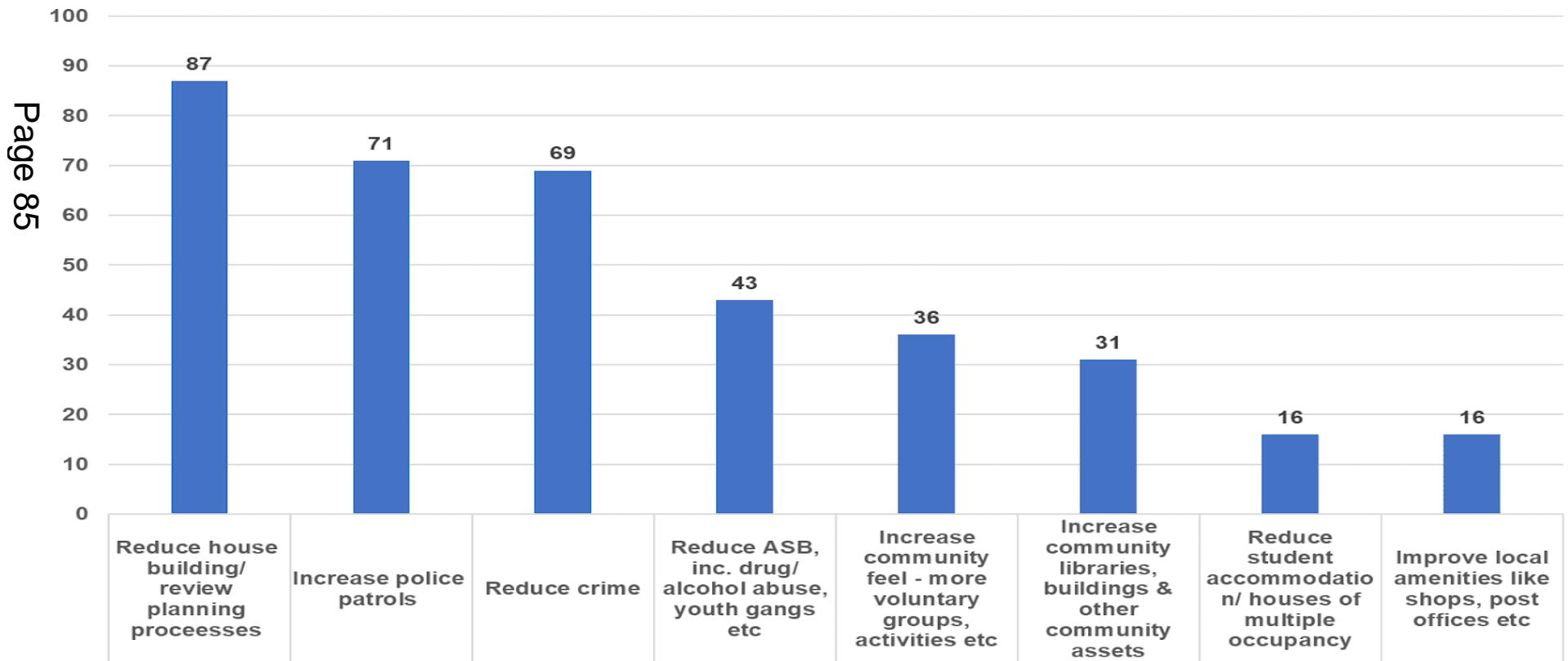
Respondents also wanted further improvements to be made to our parks and open green spaces, as well as playgrounds and play areas which we have included as part of the local environment.



Community & Neighbourhoods

Frequent responses made reference to friendly neighbours, a 'good atmosphere' and community spirit. Loneliness and isolation was seen as a key issue experienced by many older people living in the area. Local shops and amenities were seen as key community assets; however, respondents felt that in some areas they needed improvement as they are key to neighbourhood vitality – providing services and employment opportunities at a local level. The closure of post offices and banks was a cause for concern.

A desire to see a reduction in crime was a common theme, as well as requests to see an increased police presence in the local area to tackle issues such as burglaries and anti-social behaviour in local parks, and in the wider area, including drug dealing. Young adults congregating in gangs was often felt to be intimidating.





Transport & Highways

These are some of the ideas and potential solutions suggested by the SW LAC and by the community through various engagement methods to address the priorities identified.

Priority	Initial SW LAC ideas	Action
Road Safety	Implementation of 20mph zones in appropriate areas.	Added to SW LAC community plan.
	Installation of new Vehicle Activated Signs in all wards.	Added to SW LAC community plan.
	Review where new crossings may be required.	Added to SW LAC community plan.
	Explore setting up community speed watch groups supported by SY Safer Roads Partnership.	Added to SW LAC community plan.
	Ideas suggested at public workshop on 20th January 2022 / via other feedback	Response to ideas suggested at public workshop / other feedback
	Could all city be on 20mph as a default rather than specific neighbourhoods?	There are strict criteria that must be met for 20 mph zones, therefore are unable to be applied to all categories of roads in the city.
	Install more speed bumps.	These are often very expensive and unaffordable in schemes; but we will look at particular cases, such as new developments.
Need to make it easier for highways requests to be considered – could the LAC be the area this happens?	To be updated once the new Governance arrangements are in place for the new committee system.	
Cycling and Active Travel	Initial SW LAC ideas	Action
	Identify safe cycling routes and safe parking for cycles.	To consider at a forthcoming LAC meeting to agree transport priorities for the SW and recommendations to make to the Transport and Highways Committee.
	Identify/remove barriers in order to improve active travel.	Added to SW LAC community plan.
	Ideas suggested at public workshop on 20th January 2022 / via other feedback	Response to ideas suggested at public workshop / other feedback
	Encourage people to use cars less and design cycle routes in accordance with current standards to separate pedestrians and cyclists where required.	To consider at a forthcoming LAC meeting to agree transport priorities for the SW and recommendations to make to the Transport and Highways Committee.



Transport & Highways continued...

Priority	Initial SW LAC ideas	Action
Traffic and Parking	Explore restrictions to reduce inappropriate parking.	Added to SW LAC community plan.
	Explore resident parking schemes.	Added to SW LAC community plan.
	Encourage enforcement activity to prevent inappropriate parking.	Added to SW LAC community plan.
	Ideas suggested at public workshop on 20 th January 2022 / via other feedback	Response to ideas suggested at public workshop / other feedback
	Raise awareness for all residents on how they report local traffic related issues.	To consider at a forthcoming LAC meeting to agree transport priorities for the SW and recommendations to make to the Transport Committee.
	Raise awareness about inconsiderate parking and impact on emergency vehicles passing etc.	Added to SW LAC community plan.
	Increase the number of resident parking schemes.	Added to SW LAC community plan.
	Encourage more car sharing.	Added to SW LAC community plan.
	The car park in Endcliffe park is often used by commuters not people visiting the park – how can this be stopped?	There is already a pay and display in the car park which reduces this.
	School parking a big concern – especially when people park with idling engines.	Added to SW LAC community plan.
	Better signage for disabled parking bays to stop them being abused.	Added to SW LAC community plan.
Work with SYP to explore introducing a scheme to tackle inappropriate parking / offences further.	Added to SW LAC community plan.	

Page 87



Transport & Highways continued ...

Page 88

Priority	Ideas suggested at public workshop on 20 th January 2022 / via other feedback	Response to ideas suggested at public workshop / other feedback
Public Transport	Initial SW LAC ideas	Action
	Use our influence to improve bus services.	Comments from this consultation will be fed into the review that the South Yorkshire Mayoral Combined Authority is carrying out as the Governing body, as well as being considered at a forthcoming LAC meeting to agree transport priorities for the SW and recommendations to make to the Transport and Highways Committee.
	Improving bus shelters and information by liaising with appropriate organisations.	
	Ideas suggested at public workshop on 20th January 2022 / via other feedback	Response to ideas suggested at public workshop / other feedback
	More affordable buses/trams needed.	Comments from this consultation will be fed into the review that the South Yorkshire Mayoral Combined Authority is carrying out as the Governing body, as well as being considered at a forthcoming LAC meeting to agree transport priorities for the SW and recommendations to make to the Transport and Highways Committee.
	Can an oyster card system be introduced?	
Certain areas need a better provision, which is reliable and has information re bus times etc.		
Explore potential to extend Supertram for Abbeydale Road corridor.		
LAC to lobby SCC and City Region to develop Dore and Totley Station.	The Hope Valley Capacity Scheme is underway to improve the station / lines available for use. Further details can be found here The Hope Valley Railway Upgrade - Network Rail .	



Local Environment

Priority	Initial SW LAC ideas	Action
Waste, rubbish and bins	Explore options to increase recycling.	To consider at a forthcoming LAC meeting to agree recycling priorities for the SW and recommendations to make to the Environment Committee as a citywide strategy.
	Explore options for more communal bins/notices, particularly in parks for dog fouling.	Added to SW LAC community plan.
	Ideas suggested at public workshop on 20th January 2022 / via other feedback	Response to ideas suggested at public workshop / other feedback
	Develop a smart scheme for recycling to stop large items being disposed of.	To consider at a forthcoming LAC meeting to agree recycling priorities for the SW and recommendations to make to the Environment Committee as a citywide strategy.
	Explore having food waste bins, particularly for such as schools and takeaways.	
	Produce guidance for communities on what can be recycled and where in the area.	Added to SW LAC community plan.
	Plastic is a big issue – LACs talking to businesses on reducing single use plastic.	Added to SW LAC community plan to include as part of business networks/forums to be set up.
	Improved messaging needed for communal/public bins such as in blocks of flats. – i.e. not for overspill of household waste.	Added to SW LAC community plan.
	More public bins needed in parks / on highways – but can they be split so that people can still re-cycle whilst out.	Added to SW LAC community plan to review bin locations etc and consult further with communities.

Page 89



Local Environment continued ...

Priority	Ideas suggested at public workshop on 20 th January 2022 / via other feedback	Response to ideas suggested at public workshop / other feedback
Waste, rubbish and bins	Can we have more red dog waste bins?	Dog bins are no longer separate as can be put in normal bins, but will review information/signage re dog fouling for public areas.
	Can we identify a local area to trial a campaign for recycling more, then roll out across all area.	Added to SW LAC community plan to explore with volunteers to take forward.
Trees and leaves Page 90	Initial SW LAC ideas	Action
	Better leaf clearance in late autumn.	Citywide issue, to be considered by the Streetscene Committee.
	Better maintenance of street trees.	
	Ideas suggested at public workshop on 20th January 2022 / via other feedback	Response to ideas suggested at public workshop / other feedback
	Can we have an 'Adopt a tree' scheme in the parks?	Added to SW LAC community plan.
	Need to understand who is responsible for clearing leaves and the cycle they are cleared. Is leaf waste compostable?	Citywide issue, to be considered by the Streetscene Committee.
Parks, green and open spaces	Initial SW LAC ideas	Action
	Supporting Friends of Parks Groups.	Added to SW LAC community plan.
	Updating and renewal of play and fitness activities for all age ranges.	Added to SW LAC community plan.
	Encourage wild flower planting.	Added to SW LAC community plan.
	Lack of toilets in parks affect all users.	Added to SW LAC community plan.



Local Environment continued ...

Priority	Ideas suggested at public workshop on 20 th January 2022 / via other feedback	Response to ideas suggested at public workshop / other feedback
Parks, green and open spaces	Need better transport links to parks across the city and better signage/information so people know what parks we have in the city and their history.	Added to SW LAC community plan.
	Need to plant more wild flowers to help with climate change and which are useful pollinators to help insects recover.	Added to SW LAC community plan.
	Need for better assistance regarding biodiversity enhancement in parks and open spaces.	Added to SW LAC community plan.
	Leave parts of parks and open spaces to grow wild and only cut them once a year so wildflower meadows can be established.	Added to SW LAC community plan.
	Increased emphasis on the importance of the preservation and protection of the existing Sheffield Green Belt to prevent over development.	This falls within the remit of planning and The Local Plan, so has been referred to planning to respond.
Fly tipping and graffiti	Initial SW LAC ideas	Action
	Identify hot spots to work on.	Added to SW LAC community plan.
	Address issues at local Bring Sites and assess demand for them in other areas.	Added to SW LAC community plan.
	Work with young residents to produce street art.	Added to SW LAC community plan.
Streetscene footpaths, lighting etc.	Initial SW LAC ideas	Action
	Footpaths to be kept clear of encroaching plants/hedges etc.	Citywide issue, to be considered by the Streetscene Committee.
	Explore ability to dim street lights in specific areas.	
	Review gritting routes and grit bin locations.	

Page 91



Local Environment continued...

Priority	Initial SW LAC ideas	Action
Street/ environmental cleaning and maintenance	Support for voluntary litter picking groups.	Added to SW LAC community plan.
	Ideas suggested at public workshop on 20th January 2022 / via other feedback	Response to ideas suggested at public workshop / other feedback
	More signage/work needed to prevent idling engines on school runs. Enforcement would be a big help here.	Added to SW LAC community plan.
	Pavements need to be accessible and not blocked by cars.	Added to SW LAC list community plan.
Other ideas / priorities Page 92	Ideas suggested at public workshop on 20th January 2022 / via other feedback	Response to ideas suggested at public workshop / other feedback
	Can we review planning policies to protect green areas?	These points are covered by the SCC consultation for the new Local Plan and will be fed into any upcoming neighbourhood plans.
	Include swift bricks in new developments/renovations.	
	Influence planning applications for new builds/extensions to be net zero.	
	Can we have a renewable energy project?	Added to SW LAC community plan.
	Where can batteries be recycled?	Added to SW LAC community plan.
	What about 'Renew shops' like Greater Manchester has? Renew Shops - Recycle for Greater Manchester : Recycle for Greater Manchester	Citywide issue, to be considered by the Waste Management Committee.
Support for continued monitoring of air quality and exploring ways to improve it, linked to the SCC Air Quality Action Plan (2025).	Citywide issue, to be considered by the Environment Committee	



Community & Neighbourhoods

Priority	Initial SW LAC ideas	Action
Encourage community involvement	Provide support to establish new community groups where a need is identified.	Added to SW LAC community plan.
	Continue to work with the People Keeping Well team to support/identify isolated individuals.	Added to SW LAC community plan.
	Raise awareness of volunteering opportunities for all.	Added to SW LAC community plan.
	Ideas suggested at public workshop on 20th January 2022 / via other feedback	Response to ideas suggested at public workshop / other feedback
	Improve facilities for young children on Westminster estate.	Added to SW LAC community plan.
	Isolation isn't just for older residents, many young residents have experienced it through Covid – need to find a way to reduce isolation for all groups.	Added to SW LAC community plan.
	LACs to publicise what community groups do/offer etc and encourage collaboration between groups and sharing best practice.	Added to SW LAC community plan.
	Work with all groups across the area to share information etc, potential to develop community hubs.	Added to SW LAC community plan.
	Encourage all age groups to get involved in community activities and consider the different ways to communicate with different groups of people.	Added to SW LAC community plan.
	Review the community groups in the area and share details with a view to the community network expanding, more people getting involved and encouraging best practice	Added to SW LAC community plan.

Page 93



Community & Neighbourhoods continued ...

Priority	Initial SW LAC ideas	Action
Support in increasing the use of community assets, such as libraries and community buildings. Page 94	Use the Council's assets to promote and increase community use.	Added to SW LAC community plan.
	Encourage the use of libraries as community hubs.	Added to SW LAC community plan.
	Ideas suggested at public workshop on 20th January 2022 / via other feedback	Response to ideas suggested at public workshop / other feedback
	Need to identify more community buildings for use by community groups.	Added to SW LAC community plan.
	Community Libraries to be developed as community hubs.	Added to SW LAC community plan.
	LACs should identify and publicise existing community assets, and work to establish a common and affordable pricing policy.	The Council is unable to set prices for privately owned community buildings. However, for Council buildings, this is to be reviewed corporately on a city wide basis.
Reduce crime and address the perception and fear of crime.	Initial SW LAC ideas	Action
	Work with South Yorkshire Police to raise awareness on prevention of crime and anti-social behaviour.	Added to SW LAC community plan
	Support communities to set up / maintain Neighbourhood Watch Groups.	Added to SW LAC community plan
	Work with the University to support students to reduce crime in their communities.	Added to SW LAC community plan
	Learning from best practice for high quality public spaces that design out crime	Added to SW LAC community plan
	Strong desire to see more police on patrol.	It is a priority for the PCC to increase numbers and a national recruitment is underway.



Community & Neighbourhoods

Priority	Ideas suggested at public workshop on 20 th January 2022 / via other feedback	Response to ideas suggested at public workshop / other feedback
Reduce crime and address the perception and fear of crime.	Have pop up police stations in appropriate places and publicise them well.	Added to SW LAC community plan.
	Increase awareness of police alerts and how to subscribe to them. Consider if they could be improved.	Added to SW LAC community plan.
	Need for an improvement in response times when reporting ASB and closer liaison needed with police/social housing groups.	Added to SW LAC list to create low level crime stakeholder groups.
	Raise awareness on violence against women and girls.	Added to SW LAC community plan.
Reduce ASB, youth gangs and nuisance.	Initial SW LAC ideas	Action
	Work with young adults to help meet their aspirations in the local area and develop a scheme of activities.	Added to SW LAC community plan.
	Explore through Sustainable Community Officers to map hotspots to target resources where appropriate.	Added to SW LAC community plan.
	Ideas suggested at public workshop on 20th January 2022 / via other feedback	Response to ideas suggested at public workshop / other feedback
	Work with young residents to encourage them to get involved in community groups/volunteering etc.	Added to SW LAC community plan.
	Work with schools to get more young residents involved in community work/youth council and local issues.	Added to SW LAC community plan.
	Increase youth provision and facilities in the area to help engage with young residents.	Added to SW LAC community plan.

What next?

The South West LAC will:-

- Continue to work with all LACs across the City to determine which further powers and budgets can be devolved to LACs.
- Hold four public meetings per year and provide an update on the progress of the Community Plan.
- Hold single issue meetings on topics of local interest where and when appropriate.
- Continue to engage and consult with communities to review priorities for the area.
- Provide an annual report on the Community Plan and progress against it to Full Council every year.
- Represent the interest of its communities with the Council and with other bodies / organisations as appropriate to achieve the objectives of the Community Plan.



This document can be supplied in alternative formats, please contact the team to request a copy.

Sheffield City Council - Local Area Committees:
part of the Empowering Communities Programme

www.sheffield.gov.uk/home/your-city-council/local-area-committees



Email - SouthWestLAC@sheffield.gov.uk

Telephone - 0114 474 3651

This page is intentionally left blank